



Ayden Cooper (Age 15)
Little Catalina, NL
84 nights



**RONALD MCDONALD
HOUSE CHARITIES®**
Newfoundland & Labrador
2024 ANNUAL REPORT



Sammi Jo James (Age 18)
Point Leamington, NL
292 nights

Keeping Families Close

TABLE OF CONTENTS

Message from Board Chair & Vice Chair.....	4
Board of Directors/Committees.....	5
VISION • MISSION • VALUES.....	6
The Dedicated Volunteers.....	7
FAMILY SUPPORT PROGRAMS.....	8/9
THANK YOU FROM OUR FAMILY TO YOURS	
Helping Hand Awards.....	11
Adopt-a-Room Program.....	12
PULLING TOGETHER FOR FAMILIES.....	13
Community Events.....	14
McDonald's: Our Founding and Forever Partner.....	15
OUR SIGNATURE EVENTS	
House that Love Built Gala.....	17
Spare Some Love Bowling Event.....	18
FORE the Families Golf Classic.....	19
Red Shoe Crew – Walk for Families.....	20/21/22
Lights of Love Season of Giving Campaign.....	23
#FamilyIsMedicine	
Young Heroes.....	25
Donor Recognition.....	26/27
MESSAGE FROM FINANCE COMMITTEE.....	28
Financial Report.....	29
OUR IMPACT 2024.....	31

MESSAGE FROM THE BOARD OF DIRECTORS

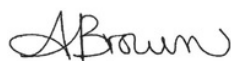
The 2024 Annual Report is more than a summary of our year—it is a heartfelt thank you. It is our opportunity to express deep gratitude for your generosity and to share the incredible impact you've made on hundreds of children and families. Together, we are making a meaningful difference in the lives of sick and injured children.

At Ronald McDonald House Charities Newfoundland and Labrador, we are honored by the trust you place in us. Compassion is at the heart of everything we do, and your support allows us to stand beside families during some of their most difficult times. Because of you, more families can focus on what matters most - their children.

In 2024, we proudly provided family-centered programs and services to 229 children and their families who traveled to St. John's for medical care. Thanks to your support, we offered a warm and welcoming home, filled with comfort, stability, and love.

Families cooked meals together, did laundry, made crafts, decorated gingerbread houses, and formed lasting friendships. These moments of normalcy and connection were made possible by our incredible community of donors, volunteers, businesses, service groups, and our founding and forever partner, McDonald's. Your unwavering support has been the foundation of our mission.

We are especially grateful to the Red Shoe Crew volunteers and community champions, who worked tirelessly to raise funds and awareness. The 2024 Red Shoe Crew-Walk for Families was a resounding success, raising an outstanding \$350,000. Our signature events also reached record-breaking milestones, thanks to the dedication of volunteers, sponsors, and participants. We were thrilled to reunite with our volunteers at the annual Strength in Numbers Volunteer Conference in April.



ANGIE BROWN
Chair, Board of Directors
Ronald McDonald House Charities
Newfoundland and Labrador

A special thank you goes to McDonald's leadership, customers, and owner-operators across Newfoundland and Labrador. Your continued commitment to our mission is deeply appreciated. McHappy Day 2024 was a tremendous success, raising an exceptional \$114,130 for our Chapter.

As we look ahead to 2025, one thing remains certain; families with sick or injured children will continue to need our care and support. Every day we receive new requests from families in need, and with your continued generosity, we will be there - providing comfort, compassion, and a place to call home; because no family should face a child's illness alone.

As I conclude my term as Chair of Ronald McDonald House Charities Newfoundland and Labrador, I am filled with immense pride and gratitude. It has been a profound honor to serve an organization so close to my heart. Helping families stay together near the medical care their children need has been a deeply meaningful journey.

This past year has reminded us of the strength and resilience of the families we serve. Whether welcoming new families, expanding our services, or strengthening community partnerships. Every step has been guided by our mission to provide essential services that remove barriers, strengthen families, and promote healing when children need healthcare.

To our dedicated staff, volunteers, donors, and Board of Directors—thank you. Your compassion and commitment have been the cornerstone of our success. I am especially grateful to our team for making my time with the house so fulfilling.

I am pleased to welcome our incoming Chair, Mr. Darren Martin. With his experience and passion for our mission, I am confident the house will continue to grow and thrive under his leadership.



ANNETTE GODSELL
Executive Director
Ronald McDonald House Charities
Newfoundland and Labrador

Board of Directors



Angie Brown
CPA, CA, CIA
Board Chair
 Partner at Grant Thornton LLP



Gail Collins
Vice-Chair
 Vice President, People & Corporate Affairs at Newfoundland & Labrador Hydro



Hilary Wicks Morrow
Director (Legal)
 Partner with Roebothan McKay Marshall



Darren Martin
Director (Finance)
 Business Development Support Services Advisor, Association of New Canadians



Margo Edison
Director
 Regional Director, Fisheries and Oceans Canada



Dr. Lisa Goodyear
Director (Medical)
 Pediatric Oncologist, Janeway Children's Hospital



Brian White
Director
 Director of Communications & External Affairs at Rio Tinto



Tony Dawe FCAE, FEC, FCSSE, P. Eng.
Director (Engineering)
 President at Phoenix Engineering, Inc.



Julieanne Griffin
Director
 CEO, Labrador North Chamber of Commerce



Melanie Callahan
Director
 Communications Coordinator, Grenfell Campus, MUN

Staff Leadership



Annette Godsell
Executive Director



Christina Morgan, CFRE
Director, Development & Communications



Jennifer Fleming
Family & Volunteer Services Manager

Board Committees

Governance Committee

- Hilary Wicks-Morrow (Chair)
- Angie Brown
- Annette Godsell

Human Resources Committee

- Gail Collins (Chair)
- Angie Brown
- Heather Peters
- Annette Godsell

Finance Committee

- Darren Martin (Chair)
- Gerry Beresford
- Annette Godsell
- Christina Morgan

Facilities Committee

- Tony Dawe (Chair)
- John Poole
- Ron Fougere
- Brittany Mouland
- Annette Godsell
- Jennifer Fleming

Development & Communications Committee

- Brian White (Chair)
- Julieanne Griffin
- Annette Godsell
- Christina Morgan

Programs & Policy Committee

- Dr. Lisa Goodyear (Chair)
- Natalie Benson
- Annette Godsell
- Jennifer Fleming

Vision Positively impact the health and lives of sick children, their families and their communities.

Mission Ronald McDonald House Charities® Newfoundland and Labrador provides sick children and their families with a comfortable home where they can stay together in an atmosphere of caring, compassion and support close to the medical care and resources they need.

Values Caring • Inclusion • Inspiration • Quality • Teamwork • Trust and Integrity

Meet Ayden Cooper

It is difficult to put into words how a parent feels when their child has been diagnosed with a serious illness. It has to be one of the most challenging experiences for a family. For families who do not live close to the medical care and resources they need, there is the added stress of distance. RMHC gives families with a sick child what they need most – each other.

In the early months of 2023, Ayden Cooper of Little Catalina, discovered a large lump that was growing on his neck. He was treated with antibiotics and over the counter medication, but the lump continued to grow. The lump had grown to surround his collar bone and was growing into his throat. He was also developing a second lump on the opposite side of his neck. In the fall of 2023, he received a referral to see a specialist at the Janeway Children's Hospital, more than 300km away from their hometown. A CT scan showed several lumps on his check which explained why it was becoming quite difficult for him to breathe. The family thought it would only be a day trip to St. John's, but Ayden was immediately admitted and spent the next eleven nights in the intensive care unit. On Ayden's 14th birthday, he had a biopsy that later determined it was Hodgkin's Lymphoma.

"It was a very scary and unexpected for us. We thought that because of the long wait that it wasn't a big deal. But after the MRI and CT scans it was much worse than we thought. It was cancer. Cancer was the word we least expected." said Alora Fisher, Ayden's mom. Ayden missed most of his grade nine school year with medical appointments, treatments, sickness and chemotherapy. Being three hours away from home, all of his regular routine was disrupted, which can be challenging for kids with autism.

"We had such a sense of relief after finding out about Ronald McDonald House. We were at the hospital for several days for something we thought was just a day appointment. Our stress and worries were drastically reduced knowing we had a place to stay to be close to Ayden while he was in the ICU. RMHC has been our home away from home. It's a place we can be a family and do our normal routines like family meals and movie nights." Alora continued.

The family was advised that Ayden would need at least five rounds of chemotherapy and there was the possibility of radiation afterwards. It would take months to complete this treatment. While Ayden's journey continued with treatments throughout 2024, the family have come to rely on the programs and services at Ronald McDonald House.

"We have received so much support from Ronald McDonald House both emotionally and financially. We don't have to worry about accommodations that are affordable and close to the hospital. It's a safe haven to come and rest and be together as a family! We have meet other parents who have been or are going through the same thing as our family. We feel so connected and supported. " said Alora.



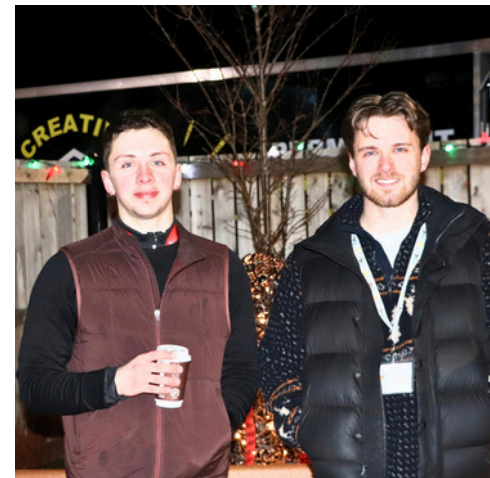
Watch Ayden's Story Here





THE DEDICATED VOLUNTEERS

Staying at Ronald McDonald House means seeing a volunteer's familiar smile to welcome you. Our valued volunteers are essential to the continuing operation of Ronald McDonald House. We cannot do it without them. Volunteers work behind the scenes in many different capacities within the House and within the community to fully support the families during this critical time in their lives.



VOLUNTEERS

BOARD/COMMITTEES	16
COMMUNITY VOLUNTEERS	225
FAMILY SERVICES VOLUNTEERS	133
TOTAL	374





FAMILY SUPPORT PROGRAMS



HOME FOR DINNER PROGRAM – With the help of individuals, corporate and community groups, we offer families the ability to return from a long stressful day at the hospital to a home-cooked meal 4-5 times each week. Groups plan the menu and prepare the meal in our fully equipped kitchen.

JUST LIKE NAN'S BAKED GOODS PROGRAM – Nothing feels more like home than the smell of fresh baked goods. Individuals, corporate and community groups bake on-site to ensure Ronald McDonald House is always stocked with special treats or Breakfast-to-Go items fresh from the oven, just like at Nan's house.



WARM WELCOME PROGRAM – Our Families Services team provide a warm welcome for all the families that come through our doors. During the check in process, families are provided with RMHC information, a guided tour, and ongoing support during their entire stay. As part of the Warm Welcome process, our families will receive a Warm Welcome Bag. Each branded welcome bag holds toiletries, information regarding the surrounding neighborhood, a personal medical journal, a home-made quilt, and an age-appropriate surprise for each child. Providing a warm welcome goes a long way in helping a family feel at home. This helps them focus on what matters most, healing their sick or injured child.



KEEPING FAMILIES CONNECTED PROGRAM – Being away from loved ones for an extended period of time can be very difficult and create added stress. To help keep families connected to home while staying at Ronald McDonald House, families will have access to a Home Office, wireless Internet, computers/tablets, email, and long distance calling & community newspapers. Families can also access special flights through a airline partnerships with RMHC NL such as WestJet Cares for Kids.

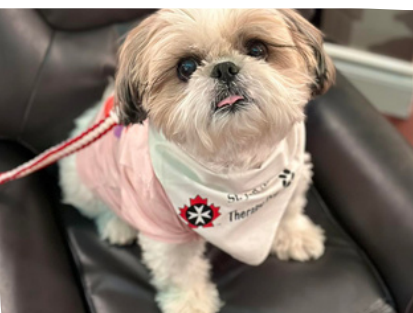




FAMILY SUPPORT PROGRAMS



MAGIC ROOM – The Magic Room is a very special place the children at Ronald McDonald House get to visit at least once during every stay, primarily at check out. The Magic Room also provides a special surprise for when they have a successful surgery, are celebrating a special event, or even if they had a rough day. The kids get to enter the Magic Room and leave with a brand new gift and a very big smile!



SPECIAL DAY CELEBRATIONS PROGRAM – Just like home, preparations are made to ensure, birthdays are celebrated. Everyone gets treats at Halloween and visitors like Santa Claus and the Easter Bunny arrive on schedule. There are many celebrations scheduled throughout the year.



HOUSE PANTRY PROGRAM – Not every family arrives at Ronald McDonald House for a scheduled medical appointment or treatment, often it can be because of a medical emergency. Together, with the help of generous donors, families have access to a fully stocked House Pantry, House refrigerator, and House freezer. Helping families adjust to life in another city, far from home with a sick child, the House Pantry Program provides a variety of staple items, including milk, eggs, butter, bread, tea, coffee, and non-perishable food items such as; canned foods, baking supplies, cereals, snacks and pastas. It also has a variety of toiletries items, laundry and cleaning supplies.



RECREATION PROGRAM – Ronald McDonald House has its own resource center fully stocked with books, craft supplies, and games. It also has a fitness room, children's play areas – including the Family Time Theatre to enjoy video game play and movies. Ronald McDonald House has its own fenced outdoor playground called Family Time Park for children and families to enjoy quality family time together. Ronald McDonald House is also conveniently located next to The Grand Concourse; an integrated walkway system. Our families also benefit from time to time with donations to Ronald McDonald House of tickets or passes to local sporting events, fitness centers, movies, special events or concerts.



Mia Figueroa (Age 7 months)
Stephenville, NL
187 nights

**THANK YOU,
FROM OUR FAMILY
TO YOURS**

HELPING HAND AWARDS

IN HONOUR OF FOUNDING BOARD MEMBER DR. JACK HAND

In 2013, Ronald McDonald House Charities Newfoundland and Labrador implemented the Helping "HAND" Awards to honour those that reflect the passion, dedication and commitment that Jack had for Ronald McDonald House and its mission of keeping families close to each other and the medical care and resources they need, when they need it the most.



Helping
HAND
Awards

IN HONOR OF FOUNDING BOARD MEMBER Dr. Jack Hand



FAMILY SERVICES VOLUNTEER AWARD

Cherry-Lynn Benson



HOUSE PROGRAMS - INDIVIDUAL

Gwen King



HOUSE PROGRAMS - COMPANY/GROUP

KPMG



OUTSTANDING PHILANTHROPIST - YOUNG HERO

Karlee MacDonald



LEADERSHIP VOLUNTEER AWARD

Shirley Kinden



RMHC CHAMPION MCDONALD'S CREW

Melissa Hayes



OUTSTANDING PHILANTHROPIST - CORPORATE

NTV / OZFM



OUTSTANDING PHILANTHROPIST - INDIVIDUAL

Jason Smith



COMMUNITY ENGAGEMENT VOLUNTEER AWARD

Natasha Hobbs

ADOPT-ME PROGRAM



THE ADOPT-ME PROGRAM is an opportunity for individuals to help families who are going through the most traumatic event in their lives – an illness or injury of their child – by adopting a room in Ronald McDonald House.

The **Adopt-ME Program** ensures that Ronald McDonald House is beautifully kept, operated and maintained for families who need a comfortable place to stay in St. John's while seeking medical attention for their child. Adoption of a room or program space for one or three years helps cover the costs associated with maintenance and upkeep of the area, ensuring it is always available for the families that stay with us each night. This program supports hundreds of families each year, making sure each space has all the necessities of home. Rooms require updating at times and this support helps make that happen.

Recognition of support is placed in the space as well as in printed pieces, media channels and our website.

12/43 Rooms Adopted

Family Suites:

- Egg Farmers of NL
- Kinsmen Co-op 50/50 Lewisporte
- McDonald's Labrador City, Grand Falls-Windsor and Mount Pearl
- Newfoundland and Labrador Hydro
- RNC Association
- Saputo
- Signature Salon - in honor of Mark Jackman
- Notre Dame Castle Building Supplies in honour of Cluny Sheppard

Program Spaces

- USW Local 9508 Voiseys Bay - Kitchen
- Miss Achievement - Volunteer Room
- Capital Subaru - Magic Room
- Reefer Repair Services/Kenworth of Newfoundland - Family Time Park (Playground)





Ellie Jones (Age 6)
Happy Valley Goose Bay, NL
30 nights

**PULLING
TOGETHER
FOR FAMILIES**

COMMUNITY EVENTS

- Abbo/Shaq for Kids Golf Tournament
- Bay Wheels Car Show
- Birthday Brunch + Baby Sprinkle
- Cargill FORE the Houses Golf Tournament
- Coastal Outdoors
- Donate A Car
- Fun Time Child Care Centre Bake Sale
- Heroes for Heroes - RNC Tactics and Rescue Unit
- IBEW 2228 Curling Funspiel
- Little People's Workshop - Smallwood Drive
- McDonald's - Fries for Good Campaign
- McHappy Day
- Rhoda Vinnicombe Offshore Workers Softball Tournament
- Stillwater RV Park
- Subaru Expo



Pull Tab Program

In 2024, we recycled 12,150,000 pulls tabs and raised just over **\$8,600** in funding. We are so grateful to have also received a match by **Dominion Recycling** in the amount of **\$4,339.55!** For size reference - ALL pull tabs donated in 2024 weighed the same as approximately 2 Orca whales! Since 2012, we have raised almost **\$48,000** from pull tabs. This is enough to cover the cost for a family to stay 175 nights at Ronald McDonald House!



McDONALD'S OUR FOUNDING AND FOREVER PARTNER

AS OUR FOUNDING AND FOREVER PARTNER, McDonald's has always had a committed and caring vision of the role Ronald McDonald Houses could play in helping sick children and their families.

McDonald's unwavering commitment to families is evidenced through their support of Ronald McDonald House each and every day. Together with their generous Franchisees, employees, suppliers, and customers, McDonald's supports our families from the sale of Happy Meals® and RMHC Cookies, customer donations in the coin boxes & rounding up or donating \$1 through the Kiosks and each year on McHappy Day®.

Thank you McDonald's for your founding and forever support for Ronald McDonald House Charities® Newfoundland and Labrador and the families we keep close.

Special thanks is extended to the McDonald's Owners/Operators:
Trevor Morris, Penny & Rob McDonald, Patrick Rioux



Financial Support from McDonald's

Operating Grant \$171,500

Coin Boxes \$21,286.30

Cashless Giving \$33,185.04

RMHC Cookies \$10,987.92

Fries for Good \$174,077.60

McHappy Day



Thank you McDonald's owner/operators, crew & customers for raising

\$114,130.80

Sponsorship \$1,200.00

Total \$526,337.65





Rayna Crann (Age 5)
Grand Falls-Windsor, NL
26 nights

OUR SIGNATURE EVENTS

HOUSE THAT LOVE BUILT GALA

On February 10, 2024 Ronald McDonald House hosted an anniversary gala where everyone in attendance truly experienced the magic and mission of RMHC NL with our special guests, RMHC kids Ryder Renouf and Connor Butt.

Thanks to the sponsors, attendees, performers and volunteers, an amazing total of **\$98,726** was raised to help keep families with a sick or injured child close to each other and the care and resources they need, when they need it most.



Presenting Sponsor \$20,000
NTV OZFM

Heart Sponsor \$15,000
McDonalds

Strength Sponsor \$5,000
NL Outfitters Encore Events

Event Total:
\$98,726



SPARE SOME LOVE BOWLING EVENT

Spare Some Love Bowling Event, introduced in 2013, is one of our annual signature fundraising events for Ronald McDonald House Newfoundland and Labrador. Bowlers of all skill levels come together for fun, networking, giveaways, and ultimately to celebrate families. Event is hosted at Plaza Bowl in St. John's.



PRESENTING SPONSOR

Tucker Solutions

GOLD SPONSOR

McDonald's

SILVER SPONSORS

Jiffy Cabs

BRONZE LANE SPONSORS

Roebathan McKay Marshall • Strategic Directions Inc. • Montana's Cookhouse • Superior Woodworking Limited

24 Teams

Event Total:
\$35,001



"FORE" THE FAMILIES GOLF CLASSIC

"FORE" the Families Golf Classic is an important initiative to help raise awareness and funds. Golfers of all skill levels came together for fun, networking, giveaways, and ultimately to celebrate families. Event was hosted at Bally Haly, St. John's.

Fore
the families
[Golf Classic]

Event Total: **\$85,961**

PRESENTING SPONSOR

McCain

BEAT THE PRO SPONSOR

NAPE

GOLD SPONSOR

McDonald's Smith Snacks
Coca-Cola

LONGEST DRIVE SPONSOR

NAPE

SILVER SPONSORS

WestJet

PUTTING CHALLENGE SPONSOR

Smith Snacks

BRONZE SPONSORS

Peak Designs Limited
Saputo

HOLE SPONSORS

Paint Shop
Penney Group
Flynn Group
Fitzpatrick's Auction
Smith Snacks
Brightisle
Pro Insurance Solutions Inc.

INTERACTIVE HOLE SPONSORS

Wooden Walls Distillery
Stewart McKelvey
Coldstream Clear
Port Rexton Brewery
Holiday Inn Express
Molson Coors
Capital Subaru



RED SHOE CREW – WALK FOR FAMILIES

The annual Red Shoe Crew-Walk for Families helps raise awareness and funds to help provide a place for our families to call home when they are going through the most traumatic event in their lives, an illness or injury of their child. This event is hosted by volunteers and held in September in communities throughout Newfoundland and Labrador. This event coincides with the anniversary of the opening of Ronald McDonald House. Participants register for pledge sheets, fundraise and come together to walk or run for fun, prizes and ultimately to celebrate families and their strength in healing a sick child.



The top 3 individual fundraisers for 2024 raised collectively more than \$27,000! Our top fundraiser for 2024 was **Natasha Hobbs of Clarenville, NL** (\$12,318). The second top fundraiser was **Emma King of Victoria, NL** (\$10,000) and our third top fundraiser was **Lux & Noah Strickland of Pilley's Island, NL** (4,820.42).

THE GRAND PRIZE FOR THE RED SHOE CREW WALK FOR FAMILIES:

For every \$500 raised on a pledge sheet participants received a ballot to win a \$500 gift card... and the winner was **Westyn and Layla Hickey**, who participated in the Placentia Walk for Families.



PROVINCIAL WESTJET CARES FOR KIDS LOTTERY

ran in conjunction with the Red Shoe Crew-Walk for Families in September. The lucky winner of a round trip for two is **Laura Brazil**

SPECIAL THANK YOU TO NLC!

Thanks to the enthusiasm and dedication of their amazing staff who encouraged customers to round up their totals at the tills, a generous gift of **\$79,007.00** made a meaningful impact on this year's campaign. Your kindness truly adds up!

**Red Shoe
Presenting Sponsor**


newfoundland labrador

**Red Work Boot
Media Sponsors**



**Red Sneaker
Provincial Sponsors**



**Red High Heel
Provincial Sponsors**



Event Total:
\$350,200

walkforfamilies.ca

Red Shoe Crew Walk FOR Families

COMMUNITY

Badger
Bay Roberts
Bonavista
Botwood
Boxey
Carbonear
Chance Cove
Clarenville
Cow Head
Cox's Cove
Deer Lake
English Harbour East
Fogo Island
Gander
Grand Falls Windsor
Hampden
Heart's Content
Irishtown-Summerside
King's Point
La Scie
Labrador Straits
Labrador West
Lark Harbour
Marystown
New Harbour
New Perlican
Norman's Cove
Old Perlican
Parson's Pond
Pilley's Island
Placentia and Area
Port aux Basques
Port aux Choix
Springdale
St. John's
Stephenville
Sunnyside
Victoria

EVENT LEADER

Myrtle Crann
Erin Higdon
Alora Fisher
Cindy Edison
Leo and Susan Rose
Kerry Butt
Shirley Clarke
Natasha Hobbs
Laura Stratton
Candice Bursey
Miranda Adams
Laura- Lee Labour
Colette Wells-Coish
Jenay & Josh King
Darlene Hancock & Shane Budgell
Katie Brennan
Brian Pitcher & Cynthia Piercey
Cindy Wells
Randi McGinitie
Debbie Burton
Janine Hudson
Tina Harris
Vicky Travers
Alison Kavanagh
Terri Beth Higdon
Ivy Piercey
Shirley Kinden & Mary Smith
Tracy Foote & Melanie Foote
Robin Payne
BJ Osmond & Charlotte Rice
Kayla Callahan
Joan Chaisson
Donalda O'Keefe
Deidre Clarke & Erica Chatman
Stephen Patten & Lorna King
Jean Ann Rioux & Nadine Butt
Sharon Bennett & Violet Traverse
Stephen & Sherry King



38 COMMUNITIES

1430 PARTICIPANTS

SHOW YOUR STRIPES



In 2024 - we joined together two amazing events - the Red Shoe Crew Walk for Families with the Sock it For Sick Kids Event! We were thrilled to see these two events officially come together as many people have been combining them for years by wearing their signature stripes socks when walking in their community! Everyone was encouraged to **#ShowYourStripes** and make your steps count for families during the annual Walk for Families.

SHOW YOUR STRIPES (formerly Sock it For Sick Kids) is a social media campaign aimed at spreading the word about the important work done at Ronald McDonald House. By sporting your red and white stripes across social media, you let the community know that you stand behind the families that need the programs and services at Ronald McDonald House.



LIGHTS OF LOVE GIVING CAMPAIGN

Christmas is an important time for families. At Ronald McDonald House it is priority to celebrate special times of the year with the families staying at our house, especially during the Holidays. The Lights of Love Season of Giving Campaign is a means for individuals, businesses and communities to celebrate keeping families close.



PRESENTED BY
NTV OZFM

The Lights of Love Campaign helps bring the magic of holidays to sick children and their families that simply cannot be a home right now. Because of you, families have a community of support around them in their toughest times. Thank you for being there for sick children and their families that need your support.

2024 Event Total:
\$98,025

To kick off the month long campaign, on Sunday December 1, 2024, OZFM was live at RMHC NL all day as we decorated for the holidays and prepared for our annual Lights of Love Lighting Ceremony which was hosted conjointly with the NTV Sunday Evening News.



The event was a major success as the community joined us for carols, candy canes, special guests, hot chocolate and the arrival of Santa Claus and Mrs. Claus!



Special thank you to Creative TrimLight who donated and installed permanent lighting at Ronald McDonald House, the entire house was lit up just in time for the holidays.





Camilla Andaya
Happy Valley-Goose Bay, NL
43 nights

#FamilyIsMedicine

YOUNG HEROES



Who said kids can't
make a difference?

RONALD MCDONALD HOUSE CHARITIES

Newfoundland and Labrador recognizes outstanding young individuals who do not let their age discourage them from making a difference in the lives of sick children and their families. Kids are never too young to learn about the importance of giving back to others and getting them interested in a charity that is important to them is the first step! Not only does helping others feel great, when kids learn how easy and fun it can be to support other kids. It will spark an interest in charitable giving that can stay with them for life. **We are so proud of our many RMHC NL Young Heroes.** Young Hero ribbons help recognize the generosity of Young Heroes who give each year to help keep families close to each other and the care and resources they need, when they need it the most.

Lara Andrews
Alexander Anstey
Celeste Anstey
Cameron Buckle
Jayden Burden
Lily Burden
Ellie May Burton
Sage Butler-Barnes
Alissa Butt
Alice Carberry
Callie Chubbs
Sophie Clowe
Rayna Crann
Caleb Davis
Ethan Dean
Evelyn Dean
Elliott Dodeman
Raquia Dwyer
Anastasia Fleming

Gabe Flynn
Olivia Gill
Alice Humphries
Alexander Jackman
Ellen Jararuse
Mason Kerfont
Emma King
Emillia Mallet
Liam Marnell
Annalise Martin
Addison Mooney
Jacob Noseworthy
Gracie Penney
Mason Piercey
Lenni Stuckey
Lex Stuckey
Jenna Taylor
Bryce Tucker
Gabriel Woodford



DONOR RECOGNITION

MONETARY AND/OR IN KIND



\$200,000+

McDonald's NL Owner/Operators Group

\$150,000+

Ronald McDonald House Charities Canada
NTV / OZFM

\$75,000+

Freedom Foods
Newfoundland Labrador Liquor Corporation

\$50,000+

Frank Maynard

\$25,000+

Capital Subaru
Cargill Value Added Meats Canada
Estate of Joan F. Bowe
Newfoundland and Labrador Hydro
Sealy Mega Groupe
Smith Snacks
United Foods Inc.

\$15,000+

Aspire Bakeries
Atlantic Oral Surgery and Dental Implant Centre
McDonald's Restaurants of Canada Ltd.
RBC Foundation

\$10,000+

Coca Cola
Creative Trimlight
Moneris Solutions Corporation
Saputo Dairy Products
WestJet Cares for Kids

\$7,500+

CIBC
McCain Foods Canada
McDonald's Restaurant P.H.R Inc.
Proctor and Gamble
Red Hat Inc.
Shell Canada

\$5,000+

Abbo/Shaq for Kids Golf Tournament
CORE Engineering Inc.
Corner Brook Regional High
DKI Canada
gg Farmers of Newfoundland and Labrador
Enterprise Holdings Foundation
Kinsmen Club Notre Dame Lewisporte

Newfoundland And Labrador Outfitters Association
Signature Salon
R. D. Pippy Family Foundation
RNC Association
Vogue Optical
XXIX Venture Limited
Colin Baxter
Ruby Holloway

\$2,500+

Allied Youth NL
Amazon
Avion Rewards
Blue Sky Family Care
Cansel Survey Equipment
Ches's Fish & Chips
Crosbie Group Limited
Doane Grant Thornton LLP
Dominion Recycling Ltd.
Dovre Group
FixAuto Head Office
Heroes For Heroes
Indian River Academy
Keurig Canada
Kruger Products
La-Z-Boy
Learning Resources Distribution Centre
Martin Brower
u-Quest Distribution Inc
PEAK Design Limited
Penney Group Inc.
Project Linus NFLD Chapter
Ronald McDonald House Charities, Inc.

Nu-Quest Distribution Inc
 PEAK Design Limited
 Penney Group Inc.
 Project Linus NFLD Chapter
 Ronald McDonald House Charities, Inc.
 St. Michael and All Angels Church
 Knitting & Sewing Club
 Sunshine Quilters Club
 Tucker Solutions
 U.C Quilting Group
 United Way of Newfoundland and
 Labrador Inc
 Angela Careen
 Annette Godsell
 Beverly Critch
 Clayton Reid
 Hazel Hill
 Margot Nash
 Sherry Goudie

\$2,000+

Bonavista Lions Club Activities Account
 Cenovus Energy Inc.
 Chris Davis & Associates
 F. J. Wadden & Sons Limited
 Holiday Inn Express and Suites
 In The Box Media Promotions
 Intact Insurance
 Kindred Spirits KS & N
 Kinsmen Club Of Stephenville
 Labatt Breweries
 Metro Self-Storage
 Mother Parker's Tea and Coffee
 Payworks
 Powell's Supermarket Limited
 Prince of Wales L.O.L. No 26
 St. Paul's ACW Lewisporte
 Stewart McKelvey Law Office
 Sun Life Assurance of Canada
 Adina Hilscher
 Brian White
 Carol Ann Stuckless
 Hailee Spence
 Katelyn Osmond
 Margaret Isaacs
 Noel Gibbons
 Randy and Virginia Bell
 Rod Legge
 Tony Dawe

\$1,000+

Active Living for Older Adults
 Advantage Sales
 Audi St. John's
 Avalon Recycling
 Bell Aliant
 Bell Canada
 BMO Financial Group
 Braya Renewable Fuels
 CCM Foundation Corporation
 Coastal Outdoors
 Conception Bay South Fire Department
 Crown Cabinets and Fireplaces Ltd.
 Department of Fisheries & Oceans
 Devan Holdings Inc
 Downhome Incorporated
 Foundation Financial Inc.
 Fun Time Child Care Centre
 GAB Realty Inc.
 Gander Quilt Guild
 KPMG
 Lions Club Paradise Centennial
 Menihek High School
 MUN Medicine
 Nape - Head Office
 Newfoundland And Labrador Credit Union
 Newfoundland Labrador Liquor Corporation
 Employees
 Parsons RV Park Ltd
 Perennial Management Limited
 Phoenix Engineering Inc.
 Quilting Crowd - Norman's Cove
 Rexall
 Rhoda Vinnicombe Offshore Workers
 Softball Tournament
 Ritchie Bros
 Rogers Communications
 RothLochston Constructors Inc.
 SaltWire Network Inc.
 Seda North America Inc.
 St. John Anglican Church
 St. John's Firefighters Association -
 Charitable Local 1075
 Triware Technologies Inc.
 Volkswagen
 Caitlin McCallum
 Chris and Annette Higdon
 Cindy Vincent
 David Antle
 Dean Foss
 Deborah Dunne

Ed Martin
 Eileen Rose
 Ella Smith
 Emma Moulard
 Erin Higdon
 Germaine Fisher
 Gordon and Eunice Wiebe
 Gwen King
 Hugh Shea
 Irene Sutton
 Jean Rose
 Kathryn Whelan
 Lisa Goodyear
 Madelyn Munro
 Marie Melendy
 Michelle Puddicombe
 Sherry Lundrigan
 Steven Ducey
 Sue McFadden
 The Hunt Family
 Vida Taylor



MESSAGE FROM FINANCE COMMITTEE FISCAL YEAR 2024

This message marks the end of another fiscal year for Ronald McDonald House of Newfoundland and Labrador Inc. ("RMHC NL", the "House"). We want to take this important opportunity to thank our management, staff, and volunteers who make the House and our important programs truly exceptional. We would also like to thank our generous donors for their continued support of the success of RMHC NL. As we continue our volunteer journey with this charity, we still find ourselves moved by the heart-warming stories from families who have stayed at the House.

On behalf of the finance committee, I am happy to report that RMHC NL was fortunate enough to be able to continue to count on the generosity and support of thousands of our donors. Individuals, community groups, service organizations, labour organizations, businesses, other charities, and government have all found ways to support our mission and to focus on providing our families with the best possible support. This support takes the form of financial contributions, in-kind contributions of goods and services, participation in a wide variety of fundraising events and countless volunteer hours. We certainly are very grateful to have maintained this level of support in 2024.

At the end of 2024, RMHC NL has combined net assets of approximately \$9,600,667. This includes the balance invested in capital assets of approximately \$5,829,242; an operating fund reserve of \$2,672,036; and unrestricted net assets of approximately \$988,325 RMHC NL has a strong cash and short-term investments position of over \$4 million at the end of the year.

RMHC NL had excess of revenue over expenditures for 2024 of approximately \$358,097. Total revenue and other support for the year increased by \$113,831 year over year to approximately \$2,232,420 for the year. Revenue and expenditures included donated goods and services of approximately \$447,796 for 2024 as compared to approximately \$329,493 in 2023.

In terms of expenditures, the cash cost of operating the charity (excluding donated goods and services and amortization of capital assets) is approximately \$1,355,749 which changed by approximately \$1,960 during the year. This increase is a result of a combination of factors including inflationary pressures, labour market changes, and general operating year over year changes. The financial information provided in this annual report is in a condensed format; however complete audited financial statements of the organization are available on request at the charity office.

Thank you for your continued support. Should you have any questions or concerns at any time, please do not hesitate to reach out. I am honoured to represent this organization and I look forward to hearing from you.



A handwritten signature in blue ink, appearing to read "Darren Martin".

Darren Martin
RMHC NL Finance Committee
Ronald McDonald House Charities
Newfoundland and Labrador

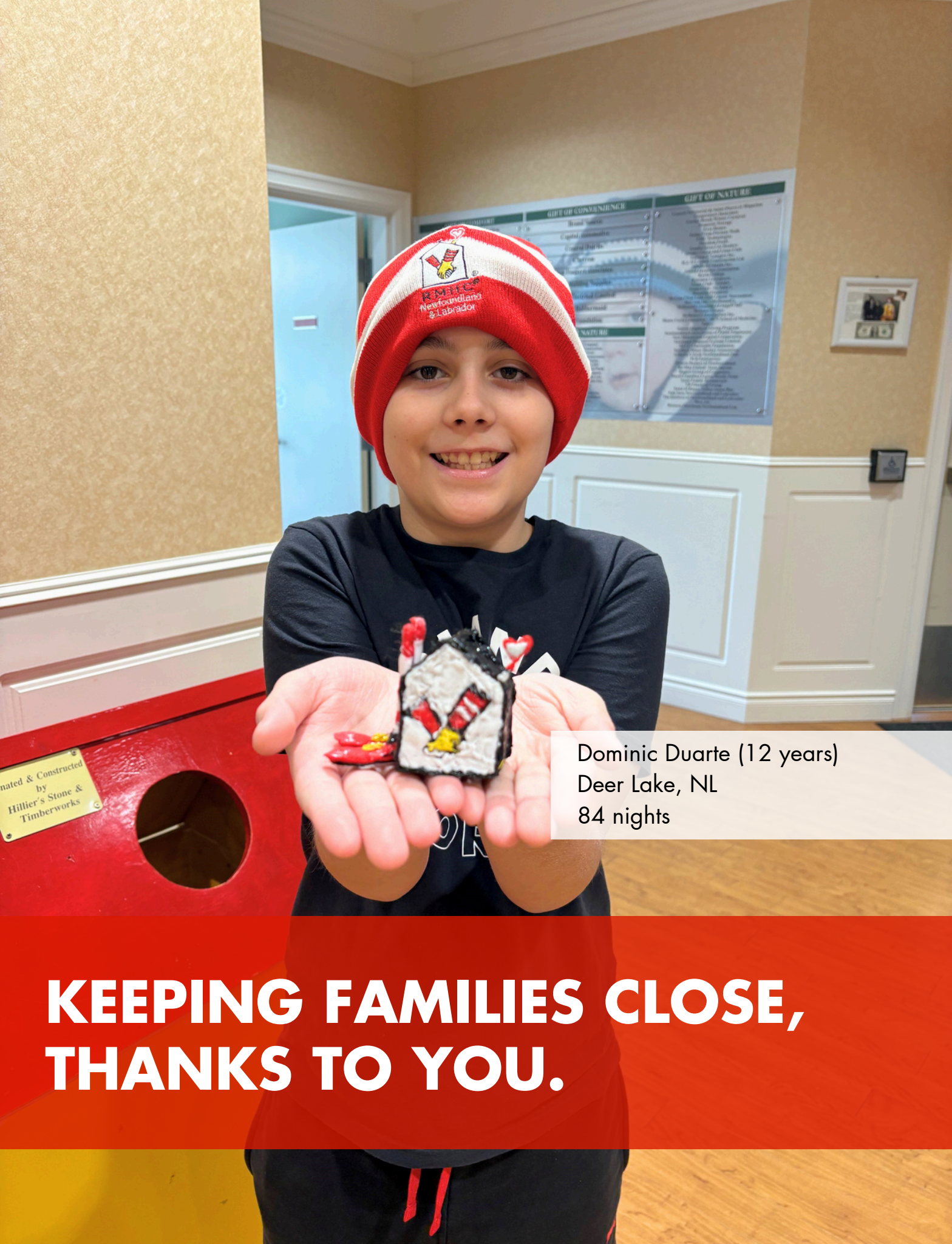
FINANCIAL REPORT

Condensed statement of revenue and expenditures and changes in fund balances

Year ended December 31	2024		2023	
Revenue				
Contributions	\$ 1,145,843	\$	1,162,895	
Fundraising activities / events	1,029,751		906,697	
RMH room donations / fees	43,000		37,765	
Other revenues	13,826		11,232	
	\$ 2,232,420	\$	2,118,589	
Expenditures				
Program	\$ 1,292,559	\$	1,069,846	
Management and general	246,315		213,103	
Fundraising	501,993		596,257	
	2,040,867		1,879,206	
Excess of operating revenue over expenditures for the year	191,553		239,383	
Investment income	166,544		119,152	
	\$ 358,097	\$	358,535	

Condensed statement of financial position

At December 31	2024		2023	
Assets				
Cash and cash equivalents	\$ 1,445,063	\$	1,659,977	
Investments	3,034,362		2,364,761	
Accounts receivable	117,404		146,739	
Prepaid expenses and other assets	23,803		24,658	
Capital assets	4,980,035		5,024,597	
	\$9,600,667		\$9,220,732	
Liabilities				
Accounts payables and accrued liabilities	\$ 111,064	\$	89,226	
Fund balances				
General fund	\$ 988,325	\$	751,005	
Restricted fund	2,672,036		2,672,036	
Capital asset fund	5,829,242		5,708,465	
	\$9,600,667	\$	9,220,732	



Dominic Duarte (12 years)
Deer Lake, NL
84 nights

**KEEPING FAMILIES CLOSE,
THANKS TO YOU.**

2024 Impact

Keeping Families Close

LONGEST STAY (CONSECUTIVE): **365 NIGHTS**



4866 NIGHTS
of comfort provided to
229 FAMILIES with children
needing medical care

Average
length of stay:

15 NIGHTS



OF AVAILABLE FAMILY SUITES: **15**

\$2.5 Million in savings to families
in accommodation & other costs

*based on the results of an 2023 Economic Impact Study completed by RBC

Without RMHC, Families could incur up to **\$7,815** in expenses for a **15-day hospital stay**
Families can contribute **\$15** per night, however, no family is turned away if they can't pay

HOUSE PROGRAMS

*best estimate on current stats



- 613** Visits to the Magic Room
- 105** Just Like Nans Baked Goods
- 172** Warm Welcome Bags
- 201** Home for Dinners made **6030** meals
- 41** Special Celebrations/Events

VOLUNTEER COMMITMENT

- 129** Family Service Volunteers spent **5353** hours taking care of the house so families have more quality time together
- 219** Community volunteers province-wide, help raise funds and awareness.
- 10** Skilled community leaders sit on our Board of Directors



WHERE FAMILIES COME FROM

*includes repeat families



Eastern NL.....68	Labrador-Grenfell.....32
Central NL.....62	Out of Province.....1
Western NL.....57	Out of Country.....9

IMPACT RESEARCH

*based on results of 2023 Economic Impact Study completed by RBC



97% of families said that RMHC:
Improved their ability to be involved in child's care,
Allowed them to rest & maintain physical well-being,
and Eased their financial burden

TOP 5 MEDICAL REASONS FAMILIES NEED RMHC

- | | |
|----------------------|------------------|
| Neonatal | Neurology |
| Otolaryngology (ENT) | Gastroenterology |
| Oncology | |





RMHC[®]
Newfoundland
& Labrador

RMHCNL.CA

P.O. Box 28091
150 Clinch Crescent, St John's, NL A1B 4J8
info@rmhcnl.ca

1-855-955-HOME (4663)
(709) 738-0000

Charitable Registration Number:
85050 2865 RR0001