



RMHC®

Newfoundland & Labrador

Keeping families close

RONALD MCDONALD HOUSE CHARITIES®

Newfoundland & Labrador

2018 ANNUAL REPORT



Peyton Toms (age 2) and her brother Liam from King's Point, NL. 33 stays, 70 nights.

Keeping families close

TABLE OF CONTENTS

VISION • MISSION • VALUES

4

Message from Board Chair & Executive Director 5
Board of Directors/Committees 6

FAMILY SUPPORT PROGRAMS

7

OUR IMPACT 2018

8

PULLING TOGETHER FOR FAMILIES

9

The Dedicated Volunteers 10
Strength in Numbers Volunteer Gathering 11
Helping Hand Awards 12
Adopt-a-Room Program 13
Community Events 14
McDonald's: Our Founding and Forever Partner 15
Miss Achievement 16

OUR SIGNATURE EVENTS

17

Spare Some Love Bowling Event 18
"Fore" the Families Golf Classic 19
Red Shoe Crew – Walk for Families 20
Team RMHC 22
Sock It For Sick Kids & Their Families 23
Lights of Love Season of Giving Campaign 24

THANK YOU FROM OUR FAMILY TO YOURS

25

Donor Recognition 26
Sixth Birthday Celebration 28

MESSAGE FROM TREASURER

29

Financial Report 30

Vision

Positively impact the health and lives of sick children, their families and their communities.

Mission

Ronald McDonald House Charities® Newfoundland and Labrador provides sick children and their families with a comfortable home where they can stay together in an atmosphere of caring, compassion and support.

Values

Caring • Inclusion • Inspiration • Quality • Teamwork • Trust and Integrity

MEET NATALIA WILLIAMS OF LABRADOR CITY

In June of 2018, 4-year-old Natalia was diagnosed with **ALL, Acute Lymphoblastic Leukemia**. Ronda, a single mother of two, had to relocate from Labrador City to St. John's on a semi-permanent bases for Natalia's treatment. Natalia, her mom and at times her older sister Haidyn (who is at home attending high school in Labrador City with extended family) find comfort and care at our very own Ronald McDonald House in St. John's for the past 271 nights. With Natalia's treatments expected to continue into the **Spring of 2019**, the Williams Family are grateful for Ronald McDonald House for keeping them close to each other and the medical care and resources they need, when they need it the most.



Natalia Williams (age 5) from Labrador City, NL.
272 nights



Thank-you for supporting the Ronald McDonald house. You are making it possible for my family to stay together while my 4-year-old goes through 8 months of chemo for her leukemia.

The Ronald MacDonald has been our home away from home.

We've been able to receive support from other parents going through the same thing which means so much to us.

Staying here has made it easier being so far away from our home.

Thank-you
XOX Natalia -4 years

MESSAGE FROM BOARD CHAIR & EXECUTIVE DIRECTOR

In 2018, we had the privilege of providing programs and services to **681 children** supported by **1005 caregivers** who traveled to St. John's for medical reasons for their child.

We continued to be humbled by the tremendous support we have received from donors, individuals, businesses, service groups, our founding and forever partner McDonald's and our large dedicated volunteer network throughout our province. This broad base of support has enabled us to provide unwavering comfort and care to families and for that we say thank you.

2018 was an exciting year with our friends at McDonald's, who along with the generous support of their customers, have provided new ways to support our families with the implementation of giving at their kiosks and the new RMHC Cookies.

Every day, the courage and strength of the children and families that stay at Ronald McDonald House reinforce the importance of our mission. Our families travel great distances to get the medical attention they need for their children. In **2018**, there were **538 family visits** to Ronald McDonald House, representing an increase of **8.25% from 2017**. While we would like to accommodate all of the families who need us, during this past year, we were not able to accommodate the requests of **282 families**. While the number of families we could not accommodate was 3% lower than 2017, we continue to actively monitor the wait list.

Ronald McDonald House provides more than just a comfortable bed to sleep in. We continue to be thrilled at the growing support from the community for our programs. From the nutritious meals and snacks lovingly prepared by individuals and groups that enable our families to enjoy more time together after a long and emotional day at the hospital, to the donated toys that are available to all our kids in our Magic Room, to the hours of kindness and

care in making each and every quilt. These are wonderful and thoughtful gifts to our families, for which we and our families are exceedingly thankful. One only has to read the overwhelmingly positive comments, repeatedly expressed by our families to see the impact that these programs have on their physical and emotional health.

Our Board of Directors have, once again, demonstrated their dedication to our mission. Each of our directors have worked diligently and, with volunteers on one of several committees, have helped implement a wide variety of policies and programs. As a board, we look forward to creating a new Strategic Plan that will advance the road map for our future.

This 2018 Annual Report is our opportunity to express our gratitude for your generosity. It is a chance for you to read about your impact on hundreds of children and families we help. **We are changing lives.** We are creating a community of support that extends across Newfoundland and Labrador, with 8 programs, over 250 volunteers and 12 RMHC staff. We are enhancing the care these families need, when they need it most. We hold high the trust you have in us as we stand together in service to the families of sick or injured children. Compassion is at the heart of RMHC and we thank you for embracing our mission. Your generosity means that more families have more time to focus on what matters most: their children.

In 2019 we'll continue to find ways to meet the growing need for our programs and services, implement best practice with governance policies, and research new programs that focus on supporting sick children and their families. With your ongoing support, we will continue to play a major role in the lives of sick children and their families. On behalf of the children and families we serve, we express our sincerest gratitude.



Theresa Rahal

THERESA RAHAL
Chair, Board of Directors
Ronald McDonald House Charities
Newfoundland and Labrador



Annette Godsell

ANNETTE GODSELL
Executive Director
Ronald McDonald House Charities
Newfoundland and Labrador

BOARD OF DIRECTORS

Theresa Rahal

Chair of Board

Dawn Dalley

Vice-Chair

Blair Rogers

Director and Chair of Governance Committee

Bill Budgell

Direct, Treasurer and Chair of Finance Committee and Development & Communications Committee

Dr. Lynette Bowes

Director, Chair of Programs & Policy Committee

Gary Follett

Director, Chair of Facilities Committee

Paul Rogers

Director

Sterling Peyton

Director

Heather Peters

Director

Erin Higdon

Director

COMMITTEES

GOVERNANCE COMMITTEE

Blair Rogers (Chair)

Theresa Rahal

Dawn Dalley

Annette Godsell

- Complete the annual update of Conflict of Interest Policy to Board Members and to committee members

HUMAN RESOURCE COMMITTEE

Theresa Rahal (Chair)

Heather Peters

Dawn Dalley

Annette Godsell

- Review Human Resources policies
- Review Human Resources manual

FINANCE COMMITTEE

Bill Budgell (Chair)

Erin Higdon

Annette Godsell

Christine Morgan

- Develop annual expense budget
- Review and approve annual fundraising goals
- Oversee financial controls
- Prepare and distribute financial reports throughout the year
- Work closely with appointed auditors
- Investment of funds

FACILITIES COMMITTEE

Gary Follett (Chair)

John Poole

Dana Penney

Tony Dawe

Annette Godsell

- Annual Preventative Maintenance review
- Proactively monitoring efficiency of HVAC system
- Ongoing monitoring and implementation of energy efficient upgrades
- Upgrade of the Parking Lot completed with the additional of gate and crosswalk
- Upgrade to storage space complete

DEVELOPMENT & COMMUNICATIONS COMMITTEE

Bill Budgell (Chair)

Paul Rogers

Heather Peters

Sterling Peyton

Annette Godsell

Christine Morgan

- Successful execution of the 2018 Integrated Development & Communications Plan

PROGRAM & POLICY COMMITTEE

Dr. Lynette Bowes (Chair)

Theresa Rahal

Crystal Northcott

Annette Godsell

Jennifer Fleming

- Ongoing review of Family Services Process
- Ongoing Program Review
- Ongoing Operational Policy Review
- Program Outreach review



Annual Impact

1 YEAR - 2018



**Ronald McDonald
House Charities®**
Newfoundland & Labrador

756,681
Savings to families

*based on the results of an Economic Impact Study by RBC
RMHC saves families \$159/day



4,759 nights of comfort and care provided to families

303 families were cared for
538 times at RMHC NL
45% were repeat families



406 families were put on a waitlist last year, with
274 turned away for lack of accommodation.

Where our families travelled from

*includes repeat families



Eastern149

Central.....229

Western87

Labrador-Grenfell.....61



Out of Province.....7

Out of Country.....5

Longest stay in 2018 (consecutive)

306 NIGHTS



Average length of stay:

10 nights

It costs an average of **\$165** to provide a bedroom at Our House each night, with families contributing **\$15** per night. No family is ever turned away if they are unable to pay.



Medical reasons why children needed RMHC NL

*includes repeat families

| | |
|--|-----|
| MEDICINE (APPOINTMENTS, INTERNAL MEDICINE, & TESTING)..... | 184 |
| SURGERY | 79 |
| INTENSIVE CARE UNITS (NEONATAL/PEDIATRIC) | 69 |
| ONCOLOGY | 80 |
| REHABILITATION | 28 |
| MENTAL HEALTH | 23 |
| CARDIOLOGY | 35 |
| NEUROLOGY | 11 |
| INJURY | 3 |
| HIGH RISK PREGNANCY | 12 |

OUR HOUSE PROGRAMS

766 Visits to the Magic Room



285 Just Like Nan's Baked Goods



276 Quilts given away to sick children & their siblings



179 Home for Dinners **6,265** meals prepared



72 Special Celebrations/Other Events



349 Tickets/Events to Recreation Program



Ronald McDonald House Charities® Newfoundland and Labrador is a community house. We rely on the support from individuals, businesses, service groups, foundations, corporate sponsors, and annual fundraising activities to ensure the programs and services are available to families each year.



Breanna Bradley (age 9)
from Boat Harbour, NL.
10 stays, 43 nights.

PULLING TOGETHER FOR FAMILIES



THE DEDICATED VOLUNTEERS

Staying at Ronald McDonald House means seeing a volunteer's familiar smile to welcome them. Our valued volunteers are essential to the continuing operation of Our House. We cannot do it without them. Volunteers work behind the scenes in many different capacities within the House and within the community to fully support the families during this critical time in their lives.

| | |
|--|------------|
| BOARD/COMMITTEES | 14 |
| REGIONAL DEVELOPMENT COORDINATORS | 4 |
| COMMUNITY VOLUNTEERS | 205 |
| FAMILY SERVICES VOLUNTEERS | 127 |
| TOTAL | 350 |

| | |
|-----------------------------|-------|
| NUMBER OF HOURS | |
| Family Services Volunteer s | 4,257 |
| Home for Dinner | 3,585 |
| Just Like Nan's | 3,229 |
| Special Events | 429 |

| | |
|--------------------------------------|---------------|
| TOTAL VOLUNTEER TIME IN-HOUSE | 11,500 |
|--------------------------------------|---------------|



INTERNATIONAL AWARD WINNING STRENGTH IN NUMBERS VOLUNTEER GATHERING



AT RONALD MCDONALD HOUSE CHARITIES NEWFOUNDLAND AND LABRADOR, we find strength in numbers and that through our efforts, children and families also find strength in numbers. The strength comes from working side-by-side with staff, volunteers, medical professionals, donors, and advocates creating a far-reaching network of support for children and families facing some of life's greatest challenges.

On April 20–21, 2018 we celebrated the strength we have as a provincial family, by inviting volunteers to join us at the Strength In Numbers Volunteer Training Conference in St. John's. At this conference we united our provincial network and rallied around a common mission of providing a home for sick or injured children and their families.

We believe that together, we will continue to find strength in our numbers and effectively increase our impact in Newfoundland and Labrador.

Volunteer Gathering included:

- A look back at 2017
- Volunteer Fun Night – Show and Tell and Hollywood STARS Lip Sync Battle
- Education Sessions
 - Medical Perspective of the importance of RMHC
 - Family Services
 - Fundraising and Communications
- Guided tour of Ronald McDonald House
- Interview with previous RMHC NL Family
- Volunteer Recognition and Awards Gala



HELPING HAND AWARDS



DR. JACK HAND
1966 – 2012

Each time the original committee and then the Board of Directors of Ronald McDonald House met, Dr. Jack Hand would ask the same question.

“When will the House be opened?” Jack had a unique understanding of the overwhelming need for Ronald McDonald House in Newfoundland and Labrador. Each and every day in his practice he would meet families who needed Our House to be opened. He continually reminded the Board of Directors that they must work hard and ensure no time was wasted in finishing the House and bringing it to the people who need it.

Jack was passionate about the project. He offered himself up to carry out any task required. He participated in fund raising activities, travelled to Labrador on two occasions to raise awareness, offered sound and frequent advice about what people needed who would stay at the House

and he even went on Open Line. He never wavered in his commitment to make the House a reality.

Ronald McDonald House opened in September of 2012. It opened with the lasting memory that the Campaign Team could not have succeeded without Jack's contribution, without his knowledge and absolute commitment to his patients and their families who need this House during very difficult times.

Ronald McDonald House Newfoundland and Labrador is grateful to the time and energy Dr. Jack Hand gave to making our House a reality.

In honor of Jack's contribution Ronald McDonald House Newfoundland and Labrador has implemented the Helping “HAND” Awards.



2018 Winners

Leadership Volunteer
Chad Haggett

Family Services
Marjorie Frampton

House Programs
Brittany Ryan

Community Engagement Volunteer
Tanya Barron

Outstanding Philanthropist – Individual
Irene Sutton

Outstanding Philanthropist – Corporate
Tucker Window Film

Outgoing Board Chair
Gerry Beresford

ADOPT A ROOM PROGRAM



THE ADOPT-A-ROOM PROGRAM is an opportunity for individuals to help families who are going through the most traumatic event in their lives – an illness or injury of their child – by adopting a room in the House.

The Adopt-a-Room Program ensures that the rooms at Ronald McDonald House are beautifully kept, operated and maintained for families who need a comfortable place to stay in St. John's while seeking medical attention for their child. Adoption of a room for one or three years helps cover the costs associated with maintenance and upkeep of the room, ensuring it is always available for the families that stay with us each night. This program supports hundreds of families each year, making sure rooms will always have necessities like comfort, clean linens and repairs. Rooms require updating at times and this support helps make that happen.

Recognition of support is placed on the bedroom door or one of the common areas in Ronald McDonald House as well as in printed pieces and media channels.

17/21 Total Adoptions

- NL Hydro – Family Suite
- PAL Airlines – Family Suite
- trades nl – Family Suite
- The Signature Salon – In Honor of Mark Jackman – Family Suite
- Nalcor Energy – Family Suite
- Kinsmen Co-Op 50/50 Lewisporte – Family Suites
- DF Barnes – Family Suite
- PAL Aerospace – Family Suite
- RNC Association – Family Suite
- trades nl – Library
- Capital Subaru – Magic Room

2018 Adoptions:

- McDonald's Stephenville, Gander and Corner Brook – Family Suite
- Miss Achievement – Volunteer Room
- Dylan Gibbons – Quilt Program Room
- Dylan Gibbons – Lower Laundry Room
- Iron Ore Company of Canada – Family Suite

2018 Renewals:

- Egg Farmers of NL – Family Suite



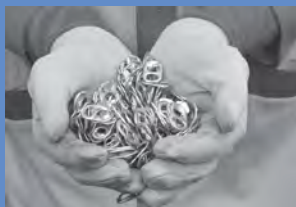
COMMUNITY EVENTS

Alex Fahey - Alex Shaves for RMHC NL
 Astaldi Canada Incorporated - Care Card Safety Program
 Andrea Newbury - Vendors for RMHC
 Bay Wheels Car Show
 Benoit's Taxi - Helping Sick Kids Fundraiser
 Brand Source - Helping Hand Event
 Brigus Blueberry Festival Committee
 Canadian Jewelry - Mikes Miracles
 Captain Cook's Hockey Tournament
 Cargill FORE the Houses Golf Tournament
 Chatters Canada - A Beautiful Cause
 Clarke's Country Corner - House Day Fundraiser
 Crowhill RV Park - Concert in the Park
 Dub Show
 Fix Auto
 Heart's Content Fire Department - Fish Fry
 Fogtown Barber & Shop - Sailor White Tees
 Indian River High School - Jeans Day
 Knights of Columbus - Weekly Crib Game
 Labrador Jeep Owners - Go Topless
 McHappy Day
 Miss Achievement
 Mustang Day Contest Fundraiser - Avalon Ford
 North East Minor Hockey Association
 - Neil Maynard Hockey Tournament
 - Blair Mitchell Hockey Tournament
 Ride for Rhett
 Sarah Knight - Sarah's Stars Dessert Café
 Skipper Joe's Souvenirs
 Team Roxanne - Walk in Memory of Roxanne Burton
 Triple F Fundraising for Friends - Gospel Concert



Pull Tab Program 2018

We recycled
6,664,000 pull tabs



Thanks to everyone that collected these little gems and thanks to our recycling partner, Dominion Recycling (who matched all monies raised from Pull Tabs), the Pull Tab program for 2018 resulted in over \$4,700. The Pull Tab Program kept a family close for 4 weeks at RMHC NL.



McDONALD'S: OUR FOUNDING AND FOREVER PARTNER

AS OUR FOUNDING AND FOREVER PARTNER, McDonald's has always had a committed and caring vision of the role Ronald McDonald Houses could play in helping sick children and their families.

McDonald's unwavering commitment to families is evidenced through their support of Ronald McDonald House each and every day. Together with their generous Franchisees, employees, suppliers, and customers, McDonald's supports our families through 10 cents from the sale of every Happy Meal®, through customer's donations to the coin boxes in restaurants and each year on McHappy Day®.

Thank you McDonald's for your founding and forever support for Ronald McDonald House Charities® Newfoundland and Labrador and the families we keep close.

Special thanks is extended to the McDonald's Owners/Operators: Trevor Morris, Doug Bennett, Ken & Loretta Scott, Keith Roberts & Genny McCarthy, Chris & Debbie McCarthy, Penny & Rob McDonald, Barry & Mary MacKinnon, Paul & Paula Rogers, Jeremy and Jane Cleveland, and Patrick Rioux.



Coin Boxes \$49,548.23

RMHC NL **\$37,881.39**

RMHC Canada **\$11,666.84**

Kiosk \$35,505.23

RMHC NL **\$26,628.97**

RMHC Canada **\$8,876.31**

RMHC Cookies \$7,086.80

RMHC NL **\$5,315.10**

RMHC Canada **\$1,771.70**



McHappy Day

Thank you McDonald's owner/operators, crew and customers for raising

\$104,035.31

Sponsorship & In-Kind Support

Sponsorship (cash) **\$ 7,500**

Sponsorship (in kind) **\$1,300**

FORE the Families Golf Classic **\$66,170**

Red Shoe Crew Walk for Families

\$263,884

Spare some Love Bowling **\$35,062**

Lights of Love **\$6,130**

Royal St. John's Regatta **\$3,639**

Total \$374,885

MISS ACHIEVEMENT

MISS ACHIEVEMENT NEWFOUNDLAND & LABRADOR SCHOLARSHIP PROGRAM is the province's largest program for young women, which awards individuals for academics, promotion of healthy living, public speaking, community service, volunteer work, environmental awareness and performance-related talents. Among the long list of scholarships provided to deserving contestants entering this program is the Isabella Ashley Spirit of Giving Award. This award is presented to the participant who raises the most money for Ronald McDonald House Charities Newfoundland and Labrador.

During the crowning Gala held at Holy Heart Theater on Sunday November 18, 2018, a presentation was made to Ronald McDonald House representatives on behalf of 26/30 participants who collectively raised an outstanding **\$18,380.70**. That's a five year total of more than \$138,000! The 2018 Winner of the *Isabella Ashley Spirit of Giving Award* was Bethany Michelin of Labrador City, NL.

NAME

Bethany Michelin
Taylor Reid
Tara Martin
Mackenzie O'Keefe
Dakota Mercer
Stephanie Budden
Laura Keefe
Brooklyn Kenny
Ava Gogal
Claire Beck
Lauren Carter
Theresa Caul
Sarah Knight
Bethany Brophy
Hayley Gillard
Eden Corcoran
Lillith Kelley
Janey-Lynn Perrier
Amber Costello
Brianna Meadus
Rebecca Vicars
Hayley Gosse
Sativa Simmonds
Erica Maloney
Julie Sheppard
Eric Bennett

HOMETOWN

Labrador City
Chapel Arm
Shoe Cove
Conception Bay South
Grand Falls-Windsor
Stephenville
Bay Roberts
Fermouse
Torbay
Massey Drive
Harbour Breton
Southern Harbour
Blaketown
Pasadena
Stephenville
Paradise
St. John's
Kippens
Conception Harbour
Harbour Grace
Torbay
Conception Bay South
Labrador City
Holyrood
St. John's
Paradise





Weelo Leveque (age 8 months) from St. Pierre et Miquelon. 263 nights.

OUR SIGNATURE EVENTS

SPARE SOME LOVE BOWLING EVENT

Spare Some Love Bowling Event, introduced in 2013, is one of our annual signature fundraising events for Ronald McDonald House Newfoundland and Labrador. Bowlers of all skill levels come together for fun, networking, giveaways and ultimately to celebrate families. Event is hosted at Plaza Bowl in St. John's.



46 Teams

PRESENTING SPONSOR

Tucker Window Film

LANE SPONSORS

Ben J. King Photography
Coca-Cola
Ian & Doreen Tucker
Flooring, Installations & Repairs
Montana's Cookhouse
Perennial Management/
KMK Capital Inc.

Roebathan McKay
Marshall
Strategic Directions Inc.
Trane Canada
Triware Technologies
Verafin Inc.
XXIX Venture Ltd.



Event Total
\$35,062



"FORE" THE FAMILIES GOLF CLASSIC

"FORE" the Families Golf Classic is an important initiative to help raise awareness and funds. Golfers of all skill levels came together for fun, networking, giveaways and ultimately to celebrate families. Event is hosted at The Wilds at Salmonier River Golf Club.



PRESENTING SPONSOR

Coca-Cola

GOLD SPONSORS

McCain Foods Canada

Smith's Snacks

SILVER SPONSORS

Grant Thornton

BRONZE SPONSORS

McDonald's

Saputo

Molson Coors

HOLE IN ONE SPONSOR

Capital Subaru

Coca-Cola

RBC

HOLE SPONSOR

Capital Precast

Grant Thornton

HIndy's Home Hardware

Jumping Bean

KoolRite Limited

Noseworthy Chapman

Nu-Quest Limited/Advantage Solutions

PAL Airlines

Prime Creative

Purity Factories

Roebathan McKay Marshall

S.E.A. Contracting

Saputo

Scotiabank-Avalon Mall

Smith Snacks

TD Bank

The Paint Shop

Tucker Electronics

WestJet

Event
Total
\$66,170



RED SHOE CREW - WALK FOR FAMILIES

The annual Red Shoe Crew-Walk for Families helps raise awareness and funds to help provide a place for our families to call home when they are going through the most traumatic event in their lives, an illness or injury of their child. This event is hosted by volunteers and held in September in communities throughout Newfoundland and Labrador. This event coincides with the anniversary of the opening of Ronald McDonald House. Participants register for pledge sheets, fundraise and come together to walk or run for fun, prizes and ultimately to celebrate families and their strength in healing a sick child.

RED WORK BOOT SPONSORS

Big Land Labrador's FM
VOCM
Hits 99.1 FM
K-Rock 97.5

RED SNEAKER SPONSORS

McDonald's
BELFOR
Coca-Cola
Cossette

RED HIGH HEEL SPONSORS

PAL Airlines
In the Box Media Promotions
WestJet

RONALD'S RED SHOE PRESENTING SPONSOR

Newfoundland & Labrador Hydro

Event Total
\$263,884



Red Shoe Crew Walk FOR Families

LOCATION

Anchor Point
Bay d'Espoir
Bishop's Falls
Chance Cove
Churchill Falls
Clarenville
Conception Bay South
Corner Brook
Deer Lake
Fortune
Gander
Glovertown
Goose Bay
Grand Falls-Windsor
Heart's Content
Irishtown-Summerside
King's Point
La Scie
Labrador City
L'Anse Au Loup
Lewisporte
Marystown
New Harbour
Norman's Cove
Old Perlican
Pilley's Island
Placentia
Port Saunders
Rigolet Nunatsiavut
Rushoon
Shearstown-Butlerville
Springdale
St. Anthony
St. John's
Stephenville
Sunnyside
Terra Nova
Twillingate
Upper Island Cove
Victoria

CREW LEADER

Nyiesha Chambers
Cheryl George
Darlene Hancock
Shirley Clarke
Diane Shears
Cecilia Marsden
Steve Dalton
Jeremy Cleveland & Paul Riley
Sarah Short
Cheryl Burt
Stephanie Shelley
Michelle Saunders
Tracey Marques
Chad Haggett
Brian Pitcher
Cindy Wells
Nikita Toms
Krista Andrews & Debbie Burton
Tina Harris
Janine Hudson
Lisa Martin
Holly Baker
Annette & Chris Higdon
Shirley Kinden
Tracy Foote
BJ Osmond
Tanya Barron
Veronica Atkins
Dina Wolfrey
Marion Barnes
Crystal Deering
Nadaine Bath
Sande Thomas
Stephen Patten
Jeremy Cleveland & Paul Riley
Sharon Bennett/Violet Traverse
Annette & Chris Higdon
Dave Dove
Charlene Smith
Stephen King

40 COMMUNITIES

2,486 PARTICIPANTS



TEAM RMHC

Team RMHC is a rewarding way to enjoy the Tely 10 experience.

Team RMHC®

Team RMHC is open to anyone! Runners or walkers of all skill levels join together as part of Team RMHC to help raise funds to provide programs and services to support families staying at Ronald McDonald House.

Team RMHC strives to make completing the Tely 10 an unforgettable experience.

2018 Team Raised:
\$9,060

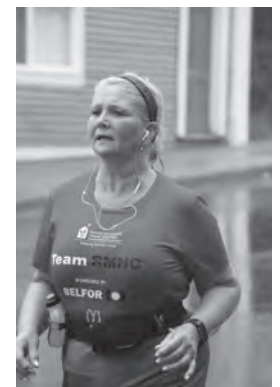
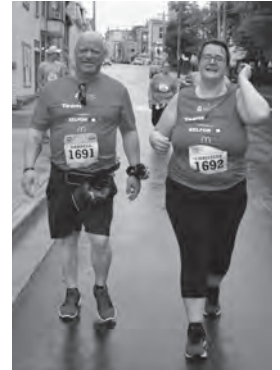
5 Year Total:
\$32,391

2018 Team RMHC

Christine Morgan
Annette Godsell
Zack Clancy (CAPTAIN)
Melissa Thomas
Minnie Clarke
Lana Roestenberg
Laura Murphy
Sarah Fitzgerald
Ryan Aspell
Kayla Parsons Collins
Darrell Hynes
Christine Hynes
Bridgette Abbott
Mark Kenny
Helen Mackey
Stephen King

Non-Running Members

Stephen Patten
Don Aspell



2018 Awards

| | |
|---------------------------|-------------------------------|
| Fastest Male 20-29 | Zack Clancy |
| Fastest Male 30-39 | Mark Kenny |
| Fastest Male 40-49 | Stephen King |
| Fastest Female 20-29 | Sarah Fitzgerald |
| Fastest Female 30-39 | Laura Murphy |
| Fastest Female 40-49 | Lana Roestenberg |
| Fastest Female 50-59 | Annette Godsell |
| Fastest Couple | Mark Kenny & Bridgette Abbott |
| Most Personal Improvement | Minnie Clarke |
| Team Loyalty - 3 Years | Ryan Aspell |
| Team Loyalty - 3 Years | Zack Clancy |
| Team Loyalty - 5 Years | Annette Godsell |
| Team Loyalty - 5 Years | Christine Morgan |
| Team Loyalty - 5 Years | Melissa Thomas |
| Rookie Awards | Darrell Hynes |
| Rookie Awards | Kayla Parsons-Collins |
| Rookie Awards | Helen Mackey |
| Rookie Awards | Christine Hynes |
| Rookie Awards | Lana Roestenberg |
| Rookie Awards | Laura Murphy |
| Rookie Awards | Stephen King |

SOCK IT FOR SICK KIDS



RONALD MCDONALD HOUSE CHARITIES®
NEWFOUNDLAND AND LABRADOR might be among one of the newest houses in the world but did you know that the first Ronald McDonald House opened its doors to families in Philadelphia on October 14th, 1974?

On October 12th we called on everyone to SOCK IT for sick kids and their families at Ronald McDonald House Newfoundland and Labrador.

The public were invited to purchase official signature striped socks and wear them on October 12th to show their love and support for Ronald McDonald House and the families we serve. With each pair of striped socks, companies, individuals, schools and organizations were raising awareness and helping families stay together when it matters most.

On October 12th, hundreds of pictures were shared on social media with **#sockitforsickkids @OurHouseNL**.

THANK YOU TO EVERYONE THAT "SOCKED IT" FOR SICK KIDS AND THEIR FAMILIES!

2018 Total:
\$47,171

5 Year Total:
\$155,240



LIGHTS OF LOVE/SEASON OF GIVING CAMPAIGN

Christmas is an important time for families. At Ronald McDonald House it is priority to celebrate special times of the year with the families staying at our house, especially during the Holidays. The Lights of Love Season of Giving Campaign is a means for individuals, businesses and communities to celebrate keeping families close.



An advance special holiday mailing kicked off the campaign, combined with seasonal tree lighting ceremonies in various communities closer to the holidays. Special tree lighting ceremonies kicked off each campaign. Trees were initially lit with white bulbs. Those who made donations were able to honor or remember a special person, or that hard to shop for individual on their Christmas list. Donors were given an opportunity to change a bulb on the tree from white to red or hang a red decoration, depending on location. They then received a campaign acknowledgment card to notify that special person of the gift. The goal was to see each Lights of Love Tree turn red during the month of December. In 2018, there were 3 Lights of Love Trees.

3 TREES IN 3 COMMUNITIES



Ronald McDonald House
Newfoundland and Labrador



Town of Peterview



Trinity Bay North



2018 Total:
\$66,480





Adaisha Osbourn (age 5)
and her sister Cadence
from Labrador City, NL.
9 stays, 253 nights.

**THANK YOU,
FROM OUR FAMILY
TO YOURS.**

DONOR RECOGNITION

MONETARY AND/OR IN KIND



\$100,000+

Ronald McDonald House
Charities Canada
McDonald's Fundraising

\$50,000+

Hebron Project Employers'
Association Inc.

\$20,000+

Moneris Solutions Corporation
Astaldi Canada Inc
Barry MacKinnon Restaurant Inc.
Cargill Value Added Meats Canada
Egg Farmers of Newfoundland
and Labrador
Newfoundland and Labrador Hydro
PAL Airlines
Scotiabank
Steele Communications
Coca Cola

\$15,000+

Canada Post Employees
Capital Subaru
D.F. Barnes Services Limited
Iron Ore Company of Canada
Kinsmen Club Notre Dame
Lewisperite

Miss Achievement NL
Scholarship Program
Nalcor Energy
RBC
Scott Family Restaurants
Thirty-One Gifts
Dylan Gibbons

\$10,000+

Freedom Foods
Bennett Restaurants
Belfor Property Restoration
McDonald's - Labrador City
McDonald's Restaurants of
Canada Ltd.
Nalcor Employee Giving Program
PLR Enterprises Inc.
SealSkin Treasures
Smith Snacks
trades nl
United Foods Inc
VOCM Cares Foundation
Westjet

\$5,000+

Benevity Community Impact Fund
Chatters Canada
Grant Thornton
In The Box Media Promotions

Knights of Columbus St. Teresa's
Council
McDonald's - Corner Brook
McDonald's - Kenmount
McDonald's - Stephenville
Signature Salon Girls
St. Barbe's Consumer Co-Op
Society Ltd.
Sunshine Quilters Club
Tucker Electronics Limited
XXIX Venture Limited
Colin Baxter
Roland Butler
Marjorie Coleman-Sadd
Brittany Ryan
Seaward Family

\$2,500+

Atlantic Grocery Distributors Limited
Benoit's Taxi
BrandSource
Brigus Blueberry Festival
Committee Inc.
C & D Family Restaurants Inc.
C&M Fabrics
Cabot Quilter's Guild
Canada Fisheries and Oceans
Cossette
Dominion Recycling Ltd.
FixAuto

Growlers Give
 Labrador Jeep Owners
 McCain Foods
 McDonald's - Bay Roberts
 McDonald's - Clarenville
 McDonald's - Conception Bay Highway
 McDonald's - Grand Falls
 McDonald's - Marystown
 McDonald's - Mount Pearl
 McDonald's - Paradise
 McDonald's - Stavanger
 McDonald's - Topsail Road
 McDonald's - Torbay
 McRoberts Enterprises Inc.
 Musgravetown United Church
 North East Minor Hockey Association
 Port Blandford Quilters Club
 RBC Rewards
 SaltWire Network Inc.
 Saputo Dairy Products Canada
 Saputo Dairy Products Canada G.P
 St. John's Edge Foundation
 T.F.I-Auction for Clamshell Grill
 TechSoup
 Nyiesha Chambers
 Beverly Critch
 Annette Godsell
 Barbara Hayward
 Dwayne Maher
 Margot Nash
 Judy Pelley
 Clayton Reid
 Jason Smith

\$1,000+

25th St. John's Rangers
 A Bunch of Good People
 Avalon Sports Inc.
 Bell Canada
 Best Buy
 Bonne Bay Quilting
 Buddy with the Plow
 Canada Bread
 Canadian Jewellery Group
 Capital Precast Limited
 Carquest
 Chatters Kelsey
 Ches's Fish & Chips
 Copper Ridge Academy
 Dr. G.B. Cross Memorial Hospital Auxiliary
 Fogtown Barber & Shop
 Fortis Properties Corporation
 George Weston Limited

Happy Valley Goose Bay Quilters Club
 Harmonine
 Hickman Automotive Group
 Hindy's Home Hardware
 Holy Redeemer Elementary
 International Brotherhood of Boilermakers - Local 203
 Intervals Music Studio
 Jiffy Cabs
 Kinsmen Club Botwood
 Kruger Products
 Labrador Fishermans Union Shrimp Co Ltd.
 Labrador Grenfell Health
 Labrador Motors Ltd.
 Lions Club Clarenville
 Lions Club English Harbour West
 Lions Club Gander
 Lions Club Port Union
 Lions Club Stephenville
 MacDonald Drive Jr. High School
 Maersk Dispatcher
 Mars - Wrigley Confectionary
 Martin Whalen Hennebury Stamp
 McDonald's - Anderson & Goulds
 McDonald's - Carbonear
 McDonald's - Gander
 McDonald's - Lewisporte
 McDonald's - WM Corner Brook
 McDonald's - WM Grand Falls
 McDonald's - WM Kelsey
 McDonald's - WM Mount Pearl
 McDonald's Restaurant P.H.R Inc.
 McInnes Cooper
 Metro Self-Storage
 Michael's Arts and Crafts
 Mother Parkers Tea and Coffee
 Music & Friends
 Nape Local 3201
 Nav Canada
 Nu-Quest Distribution Inc
 Payworks
 Plaza Bowl
 Powell's Supermarket Limited
 Prince of Wales L.O.L. No 26
 RBC Foundation
 Roebothan McKay Marshall
 Royal Bank - Kelsey Drive
 Royal Canadian Legion Branch #56
 S.E.A Contracting Limited
 Springdale Home Hardware
 St. Anne's School
 St. George's Anglican Church
 Quilting Ministry
 St. George's Women's Institute

St. John Ambulance
 St. John's Firefighters Charitable - Local 1075
 Strategic Charitable Giving Foundation
 Sun Life Assurance of Canada
 Suncor Energy
 Telus Corporation
 The Co-Operators
 The Works
 Triple F Fundraising For Friends
 United Way of Greater Toronto
 Verafin
 Viking Trail Academy
 Winds and Waves Association
 Wood Group PSN
 Woodward Auto Group
 Melina Antle
 Stephanie Budden
 Selina Carroll
 Delores Foster
 Janet Goose
 Wilma Hennebury
 Paula Hewlett
 Susie Hunt
 Lynn Janes
 Laura Keefe
 Brooklyn Kennedy
 Jeremy Lamkin
 Helena Lomond
 Judy Malkin
 Stephen Marois
 Ed Martin
 Tara Martin
 Audeen Mercer
 Dakota Mercer
 Bethany Michelin
 Andrea Newbury
 Mackenzie O'Keefe
 Taedy O'Rourke
 Darla Oxford Woodman
 Andrew Perry
 Valerie Pippy
 Ryan Preston
 Tina Randell
 Taylor Reid
 Exie Robinson
 Chad Ryan
 James Stevens
 Carol Ann Stuckless
 Irene Sutton
 Alice Tobin
 Peyton Toms
 Diane White
 Debbie Whitt

6 YEARS 1,300 FAMILIES



September 22, 2018

THE PAST SIX YEARS HAS BEEN INCREDIBLE. In fact, Ronald McDonald House has provided more than 30,200 nights of comfort and care to 1,300 families with a sick or injured child, saving them more than \$4.8M in accommodation costs alone! Now, that's worth celebrating!

Our birthday party celebration which was attended by families, volunteers and supporters of RMHC. Guests enjoyed children's activities, hot dogs, cotton candy, bouncing activities, special guest and the celebration cake.

WE WOULD LIKE TO THANK THE FOLLOWING FOR HELPING MAKE THIS CELEBRATION SUCH A SUCCESS:

Red Shoe Crew St. John's, Ben J. King Photography, Brigus Group, Cassie Perfect Makeup, Ches's Fish & Chips, Coca Cola, Cosette, Facebooth Photobooth, Frontline Action, Get your Freak on Fitness, Jelly Bean Entertainment, Jon with East Coast Conditioning, Lorna King, Volunteer Coordinator, Margot Nash, Morgan's Music, NL Dunk Tank, Purity Factories, Rotary Club of St. Johns Northwest, Spoonful of Sugar, the Party Studio. Tanya Young, The Battery Café and RMHC NL Volunteers, Independent Scentsy Consultant Jessica Gosse, Piatto, and Premier Athletic Therapy.



MESSAGE FROM TREASURER

Ronald McDonald House of Newfoundland and Labrador Inc. ("RMHC NL") continues to enjoy the generosity and support of thousands of donors, including individuals, community groups, service organizations, labour organizations, businesses, charities and government. This support takes the form of financial contributions, in-kind contributions of goods and services, participation in a wide variety of fundraising events and countless volunteer hours.

At the end of 2018, RMHC NL has combined net assets of \$7,417,596. This includes the balance invested in capital assets of \$4,845,222; an operating fund reserve of \$2,100,000; a property replacement reserve of \$362,643, a capital project reserve fund of \$4,121 to complete the storage facility constructed in the fall of 2018; and unrestricted net assets of \$105,610.

The Charity has a strong cash and short term investments position of more than \$2,556,000 at the end of the year. During 2018 the Charity acquired new capital assets with a cost of \$148,786. The majority of this represented completion of the parking area expansion and the construction of a storage building on the site.

The Charity had excess of revenue over expenditures for 2018 of more than \$258,000. Total revenue and other support for the year increased by more than \$160,000 to a level of \$1,827,365 for the year. Revenue and expenditures included donated goods and services of \$440,743 for 2018 as compared to \$389,801 in 2017.

In terms of expenditures, the cash cost of operating the charity (excluding donated goods and services) increased by approximately \$30,214 during the year, which represents a 3.3% increase.

The financial information provided in this annual report is in a condensed format; however complete audited financial statements of the organization are available on request at the charity office.

As I finish my term as Treasurer of Ronald McDonald House Charities Newfoundland and Labrador I would like to thank our management team, staff and our many volunteers for their efforts in the continued operational and financial success of Ronald McDonald House. It has been my distinct pleasure to serve as Treasurer of the organization since its inception.



WILLIAM BUDGELL

A handwritten signature in cursive script that reads "William Budgetell".

Treasurer
Ronald McDonald House Charities
Newfoundland and Labrador

FINANCIAL REPORT

Condensed Statement of Revenue and Expenditures and Changes in Fund Balances

| Year ended December 31 | 2018 | 2017 |
|--|------------------|------------------|
| Revenue | | |
| Contributions | \$1,116,697 | \$976,061 |
| Fundraising Activities/Events | 639,196 | 602,050 |
| RMH Room Donations/Fees | 56,375 | 62,256 |
| Other Revenues | 15,097 | 26,749 |
| | 1,827,365 | 1,667,116 |
| Expenditures | | |
| Program | 1,032,586 | 1,019,328 |
| Management and General | 81,292 | 77,170 |
| Fundraising | 480,349 | 419,962 |
| | 1,594,227 | 1,516,460 |
| Excess of Operating Revenue over Expenditures for the year | 233,138 | 150,656 |
| Investment Income | 25,156 | 17,761 |
| Excess of Revenue over Expenditures | \$258,294 | \$168,417 |

Condensed Statement of Financial Position

| At December 31 | 2018 | 2017 |
|---|--------------------|--------------------|
| Assets | | |
| Cash and cash equivalents | \$822,149 | \$572,378 |
| Investments | 1,733,617 | 1,709,951 |
| Accounts receivable | 103,230 | 22,144 |
| Prepaid expenses and other assets | 27,544 | 34,570 |
| Capital assets | 4,845,222 | 4,922,930 |
| | \$7,531,762 | \$7,261,973 |
| Liabilities | | |
| Accounts Payables and accrued liabilities | \$114,166 | \$102,671 |
| Fund Balances | | |
| Capital Asset Fund | 5,211,986 | 5,354,821 |
| Restricted Fund | 2,100,000 | 1,524,288 |
| General Fund | 105,610 | 280,193 |
| | 7,417,596 | 7,159,302 |
| | \$7,531,762 | \$7,261,973 |



Emma Clarke (age 5)
from Victoria, NL.
21 stays, 158 nights.

**KEEPING FAMILIES CLOSE,
THANKS TO YOU.**



RMHC[®]

Newfoundland & Labrador

Keeping families close

RMHCNL.CA

P.O. Box 28091
150 Clinch Crescent, St John's, NL A1B 4J8
info@rmhcnl.ca

1-855-955-HOME (4663)
(709) 738-0000

Charitable Registration Number: 85050 2865 RR0001