



RMHC®

Newfoundland & Labrador

Keeping families close

RONALD McDONALD HOUSE CHARITIES® Newfoundland & Labrador

2017 ANNUAL REPORT



Jerrica Bartlett (Age 2)
Labrador City, NL
3 Stays, 21 nights

Keeping families close

INCLUDES 6 PINS AND
1 BOWLING BALL
COMPREND 6 QUILLES ET
1 BOULE DE QUILLES



TABLE OF CONTENTS

VISION • MISSION • VALUES	4
Message from Board Chair & Executive Director	5
Board of Directors/Committees	6
FAMILY SUPPORT PROGRAMS	7
OUR IMPACT 2017	8
PULLING TOGETHER FOR FAMILIES	9
The Dedicated Volunteers	10
Strength In Numbers Volunteer Gathering	11
Helping Hand Awards	12
Adopt-a-Room Program	13
Community Events	14
McDonald's: Our Founding and Forever Partner	15
Miss Achievement/Andy Dunn Memorial Race Day	16
OUR SIGNATURE EVENTS	17
Spare Some Love Bowling Event	18
"FORE" the Families Golf Classic	19
Red Shoe Crew – Walk for Families	20
Team RMHC	22
Sock It For Sick Kids & Their Families	23
Lights of Love Tree Campaign	24
DONOR RECOGNITION	26
Fifth Birthday Celebration	28
MESSAGE FROM TREASURER	29
Financial Report	30

VISION

Positively impact the health and lives of sick children, their families and their communities.

MISSION

Ronald McDonald House Charities® Newfoundland and Labrador provides sick children and their families with a comfortable home where they can stay together in an atmosphere of caring, compassion and support.

VALUES

Caring • Inclusion • Inspiration • Quality • Teamwork • Trust and Integrity

MEET CHRISTIAN HATCHER AND HIS FAMILY FROM APPLETON

It is hard to put into words how parents feel when their child has been diagnosed with Leukemia. And for families who don't live close to the care and resources they need, there is an added stress caused by distance. RMHC gives families with a sick child what they need most – each other.

At the tender age of eight, Christian Hatcher of Appleton was diagnosed with Acute Myeloid Leukemia (AML), a form of cancer in which the bone marrow makes abnormal cells. The Hatcher Family, Christian, parents Sharon and Victor, and younger brother Colin, were now faced with a challenging road ahead - one filled with long drives, hospital stays, and chemotherapy treatments. This was something that no parents can prepare for. They worried about numerous things - even the simple things, like where they would stay. Shortly after they arrived in St. John's they were introduced to the programs and services of Ronald McDonald House Charities Newfoundland and Labrador.

Each day Christian's treatments were long, but Christian and his brother looked forward to the games room and movie room at Ronald McDonald House.

While Christian's journey is far from over, with treatments expected to continue for some time, the Hatcher Family continues to find strength at RMHC.



“Ronald McDonald House had such a positive impact on our family. It kept my family together. Without it our family would have been separated because we couldn't afford to stay at a hotel for that length of time. It truly was our home away from home. And we are so thankful that it is there for families to use. It made our fighting this cancer with Christian a whole lot easier. Thank you to all the staff, volunteers and sponsors for providing this service to families.”

– Sharon Hatcher



Christian Hatcher (Age 10)
Appleton, NL
13 Stays, 111 Nights

MESSAGE FROM BOARD CHAIR & EXECUTIVE DIRECTOR

In 2017, we had the privilege of providing programs and services to 460 children supported by 860 caregivers traveling to St. John's for medical reasons for their child.

We continued to be humbled by the tremendous support we have received from donors, individuals, businesses, service groups, McDonald's and our large dedicated volunteer network throughout our province. This support has enabled us to provide unwavering comfort and care to families.

Every day, the courage and strength of the children and families that stay at Ronald McDonald House reinforce the importance of our mission. Our families travel great distances to get the medical attention they need for their children. In 2017, there were 497 family visits to Ronald McDonald House, representing an increase of 13% from 2016. While we would like to accommodate all of the families who need us, during this past year, another 282 families were sent to nearby hotels, because we were full. We actively monitor the wait list.

Ronald McDonald House provides more than just a comfortable bed to sleep in. We continue to be thrilled at the growing support from the community for our programs. From the nutritious meals and snacks lovingly prepared by individuals and groups that enable our families to enjoy even more time together after a long and emotional day at the hospital, to the donated toys that are available to all our kids in our Magic Room, to the hours of kindness and care in making each and every quilt. These are wonderful and thoughtful gifts to our families, for which we and our families are exceedingly thankful. One only has to read the overwhelmingly positive comments, repeatedly expressed by our families to see the impact that these programs have on their physical and emotional health.

Our Board of Directors have, once again, demonstrated their dedication to our mission. Each of our directors have worked diligently and, with volunteers on one of several committees, have helped implement a wide variety of policies and programs. Some of the initiatives included improvements to our parking lot to better accommodate our families, programs supporters and volunteers; the execution of a comprehensive development and

communications plan; and participation in governance workshops offered by RMHC Global. As a board, we look forward to continuing to implement the Strategic Plan and developing the next iteration of the plan that will advance the road map for our future.

RMHC Global established a limited *RMHC Grants of Excellence* to provide funding to a number of chapters that advance the mission and move us toward our collective goals up to and including 2017. The program aligns financial resources with those activities that have the greatest impact and extends their efforts to strengthen the quality and sustainability of local Chapters and their programs. Ronald McDonald House Charities Newfoundland and Labrador was delighted to have been recognized for its leadership when we were awarded one of the 2017 *RMHC Grants of Excellence* and a \$18,552 grant.

This 2017 Annual Report is our opportunity to express our gratitude for your generosity. It is a chance for you to read about your impact on hundreds of children and families we help. We are changing lives. We are creating a community of support that extends across Newfoundland and Labrador, with 8 programs, over 250 volunteers and 11 RMHC staff. We are enhancing the care these families need, when they need it most. We hold high the trust you have in us as we stand together in service to the families of sick or injured children. Compassion is at the heart of RMHC and we thank you for your compassion, time, talent and financial contributions to our mission. Your contributions mean that more families have more time to focus on what matters most: their children.

With all we've accomplished, it's hard to imagine what's next; finding ways to meet the growing need for our programs and services, implementing best practice with governance policies, regional volunteer development, and researching new programs that focus on supporting sick children and their families. With your ongoing support, we will continue to play a major role in the lives of sick children and their families. On behalf of the children and families we serve, we express our sincerest gratitude.



A handwritten signature in black ink that reads "Theresa M. Rahal".

THERESA RAHAL

Chair, Board of Directors
Ronald McDonald House Charities
Newfoundland and Labrador



A handwritten signature in black ink that reads "Annette Godsell".

ANNETTE GODSELL

Executive Director
Ronald McDonald House Charities
Newfoundland and Labrador

BOARD OF DIRECTORS

THERESA RAHAL

Chair of Board

DAWN DALLEY

Vice-Chair

GERRY BERESFORD

Immediate Past Chair

BLAIR ROGERS

Director, Chair of Governance Committee

BILL BUDGELL

Director, Treasurer and Chair of Finance Committee,
Chair of Development & Communications Committee

DR. LYNETTE BOWES

Director, Chair of Programs & Policy Committee

PAUL ROGERS

Director

STERLING PEYTON

Director

HEATHER PETERS

Director

ERIN HIGDON

Director

COMMITTEES

GOVERNANCE COMMITTEE

Blair Rogers (Chair)

Gerry Beresford

Theresa Rahal

Dawn Dalley

Annette Godsell

- Review of the RMHC Governance Guide
- Complete the annual update of Conflict of Interest Policy to Board Members and to committee members
- Participate in a Governance Workshop through RMHC Global

FACILITIES COMMITTEE

Vacant (Chair)

Shawn Williams

John Poole

Dana Penney

Annette Godsell

- Annual Preventative Maintenance review
- Proactively monitoring efficiency of HVAC system
- Ongoing monitoring and implementation of energy efficient upgrades
- Upgrade of the Parking Lot Identify a solution for required additional storage space

FINANCE COMMITTEE

Bill Budgell (Chair)

Gerry Beresford

Erin Higdon

Annette Godsell

Christine Morgan

- Develop annual expense budget
- Review and approve annual fundraising goals
- Oversee financial controls
- Prepare and distribute financial reports throughout the year
- Work closely with appointed auditors
- Investment of funds

HUMAN RESOURCES COMMITTEE

Theresa Rahal (Chair)

Heather Peters

Dawn Dalley

Gerry Beresford

Annette Godsell

- Review Human Resources policies
- Review Human Resources manual

DEVELOPMENT & COMMUNICATIONS COMMITTEE

Bill Budgell (Chair)

Paul Rogers

Heather Peters

Stephen Noseworthy

Sterling Peyton

Annette Godsell

Christine Morgan

- Successful execution of the 2017 Integrated Development & Communications Plan
- Develop the 2018 Integrated Development & Communications Plan

PROGRAM & POLICY COMMITTEE

Dr. Lynette Bowes (Chair)

Theresa Rahal

Annette Godsell

Jennifer Fleming

- Ongoing Operations/Program Review
- Ongoing Operational Policy Review



Carter MacNeil (Age 6)
Stephenville, NL
12 Stays, 274 nights

PULLING TOGETHER FOR FAMILIES



THE DEDICATED VOLUNTEERS

Staying at Ronald McDonald House means seeing a volunteer's familiar smile to welcome them. Our valued volunteers are essential to the continuing operation of Our House. We cannot do it without them. Volunteers work behind the scenes in many different capacities within the House and within the community to fully support the families during this critical time in their lives.

BOARD/COMMITTEES	16
REGIONAL DEVELOPMENT COORDINATORS	4
COMMUNITY VOLUNTEERS	220
FAMILY SERVICES VOLUNTEERS	120
TOTAL	360

NUMBER OF HOURS

Family Services Volunteers	5,655
Home for Dinner	3,498
Just Like Nan's	2,698
Special Events	439
TOTAL VOLUNTEER TIME IN-HOUSE	12,290



INTERNATIONAL AWARD WINNING STRENGTH IN NUMBERS VOLUNTEER GATHERING



AT RONALD MCDONALD HOUSE CHARITIES NEWFOUNDLAND AND LABRADOR, we find strength in numbers and that through our efforts, children and families also find strength in numbers. This strength comes from working side-by-side with staff, volunteers, medical professionals, donors, and advocates creating a far-reaching network of support for children and families facing some of life's greatest challenges.

On April 21 & 22, 2017 we celebrated the strength we have as a provincial family, by inviting volunteers to join us at the Strength In Numbers Volunteer Training Conference in St. John's. At this conference we united our provincial network and rallied around a common mission of providing a home for sick or injured children and their families.

We believe, that together, we will continue to find strength in our numbers and effectively increase our impact in Newfoundland and Labrador.

Volunteer Gathering included:

- A look back at 2016
- Volunteer Fun Night – Lip Sync Battle
- Education Sessions
 - Organizational History
 - House Operations
 - Fundraising & Communications
- Guided tour of Ronald McDonald House
- Volunteer Recognition and Awards Gala



HELPING HAND AWARDS



DR. JACK HAND
1966 – 2012

Each time the original committee and then the Board of Directors of Ronald McDonald House met, Dr. Jack Hand would ask the same question. "When will the House be opened?" Jack had a unique understanding of the overwhelming need for Ronald McDonald House in Newfoundland and Labrador. Each and every day in his practice he would meet families who needed Our House to be opened. He continually reminded the Board of Directors that they must work hard and ensure no time was wasted in finishing the House and bringing it to the people who need it.

Jack was passionate about the project. He offered himself up to carry out any task required. He participated in fund raising activities, travelled to Labrador on two occasions to raise awareness, offered sound and frequent advice about what people needed who would stay at the House and he even went on Open Line.

He never wavered in his commitment to make the House a reality.

Ronald McDonald House opened in September of 2012. It opened with the lasting memory that the Campaign Team could not have succeeded without Jack's contribution, without his knowledge and absolute commitment to his patients and their families who need this House during very difficult times.

Ronald McDonald House Newfoundland and Labrador is grateful to the time and energy Dr. Jack Hand gave to making our House a reality.

In honor of Jack's contribution Ronald McDonald House Newfoundland and Labrador has implemented the Helping "HAND" Awards.



2017 Winners

Leadership Volunteer
Stephen Patten

Family Services Volunteer
Nicole Devereaux

House Programs
Taedy O'Rourke

Community Engagement Volunteer
Shirley Clarke

Outstanding Philanthropist
Capital Subaru

ADOPT A ROOM PROGRAM



THE ADOPT-A-ROOM PROGRAM IS AN OPPORTUNITY FOR INDIVIDUALS to help families who are going through the most traumatic event in their lives – an illness or injury of their child – by adopting a room in the House.

The Adopt-a-Room Program ensures that the rooms at Ronald McDonald House are beautifully kept, operated and maintained for families who need a comfortable place to stay in St. John's while seeking medical attention for their child. Adoption of a room for one or three years helps cover the costs associated with maintenance and upkeep of the room, ensuring it is always available for the families that stay with us each night. This program supports hundreds of families each year, making sure rooms will always have necessities like comfort, clean linens and repairs. Rooms require updating at times and this support helps make that happen.

Recognition of support is placed on the bedroom door or one of the common areas in Ronald McDonald House as well as in printed pieces and media channels.



- 12/21 Adoptions**
- Kinsmen Coop Lewisporte 50/50 – Family Suite
 - DF Barnes - Family Suite
 - Egg Farmers of NL – Family Suite
 - trades nl – Library
 - Capital Subaru – Magic Room
 - trades nl – Family Suite
 - The Signature Salon – In Honor of Mark Jackman – Family Suite
- 2017 Adoptions:**
- McDonald's Stephenville, Gander and Corner Brook
 - PAL Airlines – Family Suite
 - NL Hydro – Family Suite
 - Nalcor Energy – Family Suite
 - PAL Aerospace – Family Suite



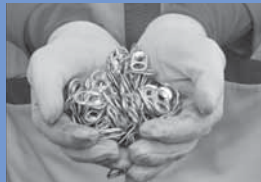
COMMUNITY EVENTS

- Alex Wong Cross Canada Tour
- 6th Annual Andy Dunn Memorial Race Day
- Bay Wheels Car Show
- Brand Source - Helping Hand
- Brody's Home-Away-From-Home
- Canadian Jewelry - Mike's Miracles
- Cargill For the Houses Golf Tournament
- CarQuest Canada Charitable Foundation
- CBS Fire Department - FireFit Fun Run
- Chatters Canada - A Beautiful Cause
- Clarke's Country Corner - House Day
- Dub Show
- FixAuto
- Investors Group Dinner
- Jennifer Antle - Auction
- Labrador Jeep Owners - Go Topless
- McHappy Day
- Mild Hogs
- Miss Achievement
- Nor'Easter
- North East Minor Hockey Association
 - Neil Maynard Hockey Tournament
 - Blair Mitchell Hockey Tournament
- Queen Elizabeth Regional High School "Students for Change Wake-a-Thon"
- Robyn Pearce - Kindermusik
- Ryan Murphy's Race for Reason
- St. Anne's School - Bake Sale
- St. John's Firefighters Charitable Local 10 - Shamrock Showdown
- VOCM Dial-a-Carol
- Weston Bakery Limited/ George Weston Limited
- Wolverine Supplies



PULL TAB PROGRAM 2017

We recycled **5,056,800** pull tabs



Thanks to everyone that collected these little gems and thanks to our recycling partner, Dominion Recycling (who matched all monies raised from Pull Tabs), the Pull Tab program for 2017 resulted in \$3,600. The Pull Tab Program kept a family close for 2 weeks at RMHC NL.





FAMILY SUPPORT PROGRAMS

HOME FOR DINNER PROGRAM

With the help of individuals, corporate and community groups, we offer families the ability to return from a long stressful day at the hospital to a home-cooked meal 4-5 times each week. Groups plan the menu and prepare the meal in our fully equipped kitchen.

JUST LIKE NAN'S BAKED GOODS PROGRAM

Nothing feels like home more than the smell of fresh baked goods. Individuals, corporate and community groups bake on-site to ensure Ronald McDonald House is always stocked with special treats or Breakfast-to-Go items fresh from the oven, just like at Nan's house.

COMFORT QUILT PROGRAM

Each child who visits Ronald McDonald House has an opportunity to choose one quilt from a collection of beautiful handmade quilts generously provided by individuals and/or groups that they can keep and take home. This is a wonderful way to welcome children to Ronald McDonald House.

KEEPING FAMILIES CONNECTED PROGRAM

Being away from loved ones for an extended period of time can be very difficult and create added stress. To help keep families connected to home while staying at Ronald McDonald House, families will have access to a Home Office, wireless internet, computers/tablets, email, and long distance calling & community newspapers. Families can also access special flights through a partnerships RMHC NL has with WestJet Cares Program and PAL Airlines.

MAGIC ROOM

The Magic Room is a very special place the children staying at Ronald McDonald House get to visit at least once during every stay, primarily at check out. The Magic Room also provides a special surprise for when they have a successful surgery, are celebrating a special event or even if they had a rough day. The kids get to enter the Magic Room and leave with a brand new gift and a very big smile!

SPECIAL DAY CELEBRATIONS PROGRAM

Just like home, preparations are made to ensure, birthdays are celebrated, everyone gets treats at Halloween and visitors like Santa Claus and the Easter Bunny arrive on schedule. There are many celebrations scheduled throughout the year.

HOUSE PANTRY

With the help of our generous donors, families have access to a fully stocked House pantry, which includes food staple items, a house refrigerator and freezer along with access to toiletries and cleaning supplies.

RECREATION PROGRAM

Ronald McDonald House has its own resource center fully stocked with books, craft supplies and games. It also has children's play areas, video game and movie rooms. Ronald McDonald House has its own outdoor playground for children to play, conveniently located next to The Grand Concourse; an integrated walkway system. Families also benefit from time to time with donations to Ronald McDonald House of tickets or passes to local sporting events, fitness centers, movies, special events or concerts.

OUR IMPACT – 2017

\$764,790

Savings to families

*based on the results of an Economic Impact Study by RBC
RMHC saves families \$159/day



4810 nights of comfort and care provided to families

497

times families were cared for In 2017

56% were repeat families



471 families were put on a waitlist, with **282** turned away for lack of accommodation.

Where our families travelled from

*includes repeat families



Eastern	113
Central.....	186
Western	129
Labrador-Grenfell.....	67
Out of Province.....	1
Out of Country.....	1



Longest stay in 2017

245 NIGHTS



Average length of stay:

11 nights

It costs an average of **\$165** to provide a family suite each night. Families can contribute **\$15** per night. No family is ever turned away if they are unable to pay.



Medical reasons why children needed RMCH NL

*includes repeat families

SURGERY.....	97
MEDICINE (APPOINTMENTS, INTERNAL MEDICINE, & TESTING).....	151
INTENSIVE CARE UNITS (NEONATAL/PEDIATRIC)	73
ONCOLOGY.....	62
REHABILITATION.....	40
MENTAL HEALTH.....	24
CARDIOLOGY.....	16
NEUROLOGY.....	15
INJURY.....	12
HIGH RISK PREGNANCY.....	7

PROGRAMS

568	Visits to the Magic Room	
324	Just Like Nan's Baked Goods	
262	Quilts given to sick children & their siblings	
203	Home for Dinners	
7,105	meals prepared	
72	Special Celebrations/Other events	
100	Tickets/Events to Recreation Program	

McDONALD'S: OUR FOUNDING AND FOREVER PARTNER

AS OUR FOUNDING AND FOREVER PARTNER, McDonald's has always had a committed and caring vision of the role Ronald McDonald Houses could play in helping sick children and their families.

McDonald's unwavering commitment to families is evidenced through their support of Ronald McDonald House each and every day. Together with their generous Franchisees, employees, suppliers, and customers, McDonald's supports our families through 10 cents from the sale of ever Happy Meal®, through customer's donations to the coin boxes in restaurants and each year on McHappy Day®.

Thank you McDonald's for your founding and forever support for Ronald McDonald House Charities® Newfoundland and Labrador and the families we keep close.

Special thanks is extended to the McDonald's Owners/Operators: Trevor Morris, Doug Bennett, Ken & Loretta Scott, Keith Roberts & Genny McCarthy, Chris & Debbie McCarthy, Penny & Rob McDonald, Barry & Mary MacKinnon, Paul & Paula Rogers, Jeremy and Jane Cleveland, and Patrick Rioux.



Coin Boxes

Thanks to your coin boxes, an amazing

\$53,718.97

went to supporting sick children and their families in 2017!

(RMHCNL \$42,719.15, RMHC Canada \$11,000.61*)

McHAPPY DAY



Thank you McDonald's owner/operators, your crews and customers for raising

\$101,579.83

Sponsorship & In-Kind Support

Sponsorship (cash) **\$7,000**

Fore the Families

Golf Classic **\$63,634**

Red Shoe Crew

Walk for Families **\$244,743.82**

Spare Some Love

Bowling **\$34,860**

Sponsorship (in kind) **\$1,700**

Enchanted Family

Fun Event **\$5,171.44**

Royal St. John's

Regatta **\$3,394.25**

\$351,803

MISS ACHIEVEMENT

ANDY DUNN MEMORIAL RACE DAY

Miss Achievement Newfoundland & Labrador Scholarship Program is the province's largest program for young women, which awards individuals for academics, promotion of healthy living, public speaking, community service, volunteer work, environmental awareness and performance-related talents. Among the long list of scholarships provided to deserving contestants entering this program is the *Isabella Ashley Spirit of Giving Award*. This award is presented to the participant who raises the most money for Ronald McDonald House Charities Newfoundland and Labrador. During the crowning Gala held at Holy Heart Theater on Sunday November 19, 2017, a presentation was made to Ronald McDonald House representatives on behalf of the participants who collectively raised an outstanding \$15,096.15. That's a five year total of more than \$117, 000! The 2017 Winner of the *Isabella Ashley Spirit of Giving Award* was **Sarah Knight** of Blaketown, NL.

The 6th Annual Andy Dunn Memorial Race day took place on July 15, 2017 at Eastbound International Speedway in Avondale. This event raised more than \$33,152.55. That's a 6 year total of more than \$95,000.

The ONLY car show with ACTION

Andy's parents, Chris and Roseanne, and brother Matt, are dedicated to keeping his memory alive by helping to keep families together at Ronald McDonald House. Andy's strength, knowledge, and acceptance of his fate was something not commonly seen in young adults struggling with cancer. The Dunn Family benefited from two different houses during his treatments, therefore, the proceeds from Andy Dunn Memorial Race Day will help families who stay at Ronald McDonald House Charities® Newfoundland and Labrador.





Dani & Jabez Preston
(Age 17 months)
Gander, NL
4 Stays, 252 nights

OUR SIGNATURE EVENTS

SPARE SOME LOVE BOWLING EVENT

Spare Some Love Bowling Event, introduced in 2013, is one of our annual signature fundraising events for Ronald McDonald House Newfoundland and Labrador. Bowlers of all skill levels come together for fun, networking, giveaways and ultimately to celebrate families. Event is hosted at Plaza Bowl in St. John's.



53 Teams

PRESENTING SPONSOR

Tucker Window Film

LANE SPONSORS

BABB Security
 Conduit Electric Inc.
 Coca-Cola
 Cougar Engineering
 Ian & Doreen Tucker Flooring, Installations & Repairs
 In the Box Media Promotions
 Jiffy Cabs
 Montana's Cookhouse

Pennecon Limited
 Roebathan McKay Marshall
 Royal LePage
 Royal LePage Atlantic Homestead Ltd.
 Short Atlantic Industries
 Strategic Directions Inc.
 Triware Technologies
 Verafin Inc.

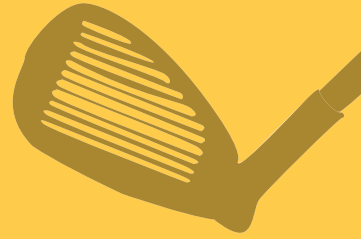
Event Total

\$34,860.00



"FORE" THE FAMILIES GOLF CLASSIC

"FORE" the Families Golf Classic is an important initiative to help raise awareness and funds. Golfers of all skill levels came together for fun, networking, giveaways and ultimately to celebrate families. Event is hosted at The Wilds at Salmonier River Golf Club.



PRESENTING SPONSOR

Coca-Cola

Event Total
\$63,634

GOLD SPONSOR

McCain Foods Canada
Smith's Snacks

SILVER SPONSOR

Grant Thornton

BRONZE RONALD'S PUTTING CHALLENGE SPONSOR

Capital Subaru
Coca-Cola

HOLE IN ONE SPONSORS

Capital Subaru
Coca-Cola

HOLE SPONSORS

Capital Precast
Grant Thornton
Hickman Automotive Group
KPMG (KPMH Management Services LP)
Noseworthy Chapman
Nu-Quest Distribution
Prime Creative

Roebathan McKay Marshall
Saputo
Sinnott Hydroseeding
The Paint Shop
Tucker Electronics
WestJet



RED SHOE CREW – WALK FOR FAMILIES

The annual Red Shoe Crew-Walk for Families helps raise awareness and funds to help provide a place for our families to call home when they are going through the most traumatic event in their lives, an illness or injury of their child. This event is hosted by volunteers and held in September in communities throughout Newfoundland and Labrador. This event coincides with the anniversary of the opening of Ronald McDonald House. Participants register for pledge sheets, fundraise and come together to walk or run for fun, prizes and ultimately to celebrate families and their strength in healing a sick child.

Red Work Boot Sponsors

Big Land Labrador's FM
VOCM
Hits FM
K-Rock

Red Sneaker Sponsors

BELFOR
Coca-Cola
Cossette
McDonald's
Purolator

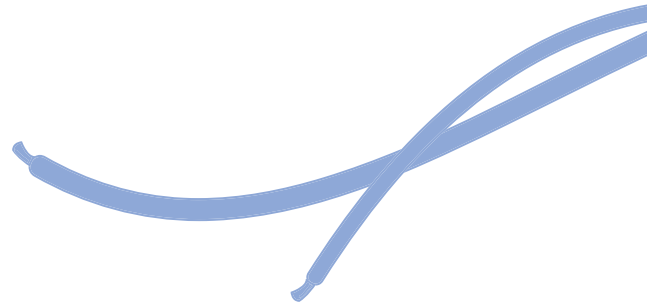
Red High Heel Sponsors

PAL Airlines
In the Box Media Promotions
WestJet

Ronald's Red Shoe Presenting Sponsor

Newfoundland and Labrador Hydro

Event Total
\$244,743.82



Red Shoe Crew Walk FOR Families



LOCATION

Bishop's Falls
 Carbonear
 Chance Cove
 Churchill Falls
 Clarendville
 Conception Bay South
 Corner Brook
 Deer Lake
 Fortune
 Gander
 Glovertown
 Goose Bay
 Grand Falls-Windsor
 Heart's Content
 Kings Point
 La Scie
 Labrador City
 L'Anse Au Loup
 Lewisporte
 Lumsden
 Milltown (Bay d'Espoir)
 New Harbour
 New-Wes-Valley
 Old Perlican
 Pasadena
 Paradise
 Pilley's Island
 Placentia
 Point Leamington
 Port Saunders - Tri Town
 Shearstown/Butterville
 Springdale
 St. Anthony
 St. John's
 Stephenville
 Sunnyside
 Terra Nova
 Torbay
 Town of Irishtown-Summerside
 Trinity Bight
 Twillingate
 Upper Island Cove Summer Camp
 Victoria

CREW LEADER

Darlene Hancock
 Kerry Parsons
 Shirley Clarke
 Diane Shears
 Ceceila Marsden
 Dominic Ryan
 Jeremy Cleveland & Paul Riley
 Sarah Short
 Cheryl Burt
 Dana Collins
 Michelle Saunders
 Tracey Marques
 Camille Bryan/Chad Haggett
 Brian Pitcher
 Nikita Toms
 Krista Andrews/Debbie Burton
 Tina Harris
 Janine Hudson
 Lisa Martin
 Paula Tulk
 Cheryl George
 Annette & Chris Higdon
 Beverly March
 Tracy Foote
 Amanda Squires
 Caroline Watton
 BJ Osmond
 Tanya Barron
 Lisa Roberts
 Sandee Thomas
 Crystal Deering
 Nadaine Bath
 Sandee Thomas
 Stephen Patten
 Jeremy Cleveland & Paul Riley
 Sharon Bennett
 Annette & Chris Higdon
 Lorna King
 Cindy Wells
 Lorna King
 Dave Dove
 Charlene Smith
 Stephen King



43 COMMUNITIES

2,464 PARTICIPANTS

TEAM RMHC

Team RMHC is a rewarding way to enjoy the Tely 10 experience.

Team RMHC®

Team RMHC is open to anyone! Runners or walkers of all skill levels join together as part of Team RMHC to help raise funds to provide programs and services to support families staying at Ronald McDonald House.

Team RMHC strives to make completing the Tely 10 an unforgettable experience.

2017 Team raised \$7003.4
4 year total \$23,331

2017 Team RMHC
Christine Morgan
Annette Godsell
Danielle Broomfield
Zack Clancey
Katelyn Collins
Melissa Thomas
Ryan Aspell
Lorna King
Sarah Fitzgerald
Shelly Follett
Minnie Clarke
Andrew Bragg

Non-Running Members
Brittany Ryan
Stephen Patten
Don Aspell
Sean Lawlor



SOCK IT FOR SICK KIDS & THEIR FAMILIES



RONALD MCDONALD HOUSE CHARITIES® NEWFOUNDLAND AND LABRADOR might be among one of the newest houses in the world but did you know that the first Ronald McDonald House opened its doors to families in Philadelphia on October 14, 1974?

On October 13th we called on everyone to SOCK IT for sick kids and their families at Ronald McDonald House Newfoundland and Labrador.

The public were invited to purchase official signature striped socks and wear them on October 13th to show their love and support for Ronald McDonald

House and the families we serve. With each pair of striped socks, companies, individuals, schools and organizations were raising awareness and helping families stay together when it matters most.

On October 13th, hundreds of pictures were shared on social media with #sockitforsickkids @OurHouseNL.

THANK YOU TO EVERYONE THAT "SOCKED IT" FOR SICK KIDS AND THEIR FAMILIES!

2017: \$33,609.
That's a three year total of \$93,236!!



LIGHTS OF LOVE TREE CAMPAIGN

Christmas is an important time for families. At Ronald McDonald House it is a priority to celebrate special times of the year with the families staying at Our House, especially during Christmas. The Lights of Love Tree Fundraising Campaign is a means for individuals, businesses and communities to celebrate keeping families close.



Special tree lighting ceremonies kicked off each campaign. Trees were initially lit with white bulbs. Those who made donations were able to honor or remember a special person, or that hard to shop for individual on their Christmas list. Donors were given an opportunity to change a bulb on the tree from white to red or hang a red decoration, depending on location. They then received a campaign acknowledgment card to notify that special person of the gift. The goal was to see each Lights of Love Tree turn red with love during the month of December.

In 2017, there were 5 Lights of Love Trees
\$10,860

5 TREES IN 2 COMMUNITIES



St. John's



Trinity Bay North



Peterview



Fairfield Inn & Suites
St. John's



Bishop's Falls





Sophie (Age 5) &
Kaydee McIsaac (Age 7)
Stephenville, NL
27 stays, 353 nights

**THANK YOU,
FROM OUR FAMILY
TO YOURS.**

DONOR RECOGNITION

MONETARY AND/OR IN KIND

\$100,000+

McDonald's Fundraising
Ronald McDonald House
Charities Canada

\$40,000+

Cargill Value Added Meats
Canada
Newfoundland and Labrador
Hydro

\$20,000+

Steele Communications
Barry MacKinnon Restaurant Inc.
Canadian Quilters Association

\$10,000+

Belfor Property Restoration
Bennett Restaurants
Canada Post Employees
Capital Subaru
Coca Cola
Freedom Foods
McDonald's Restaurant P.H.R Inc.
McDonald's Restaurants of
Canada Ltd.
Miss Achievement
Nalcor Energy
Provincial Airlines
Pal Aerospace Ltd.
PLR Enterprises Inc.
RBC Foundation
Ronald McDonald House
Charities, Inc.
Scott Family Restaurants
Seadrill Canada Ltd.
trades nl
Westjet

\$5,000+

AGD Grocery Foodservice
Agropur - Central Dairies
Ascension Collegiate
Benevity Community Impact
Fund
Chatters Canada
D.F. Barnes Services Limited
Egg Farmers of NL

George Weston Limited
In The Box Media Promotions
Kinsmen Club Notre Dame
Lewisporte
McDonald's - Stephenville
Muskrat Falls Camp
Nalcor Employee Giving
Program
Newfoundland Liquor
Corporation
Party City
Pinnacle Engineering Limited
Royal Bank of Canada - Main
Branch
Royal Newfoundland
Constabulary
Signature Salon Girls
St. John's Firefighters Charitable
- Local 1075
Thirty-One Gifts
Tucker Electronics Limited
United Foods Inc.
Colin Baxter
Beverly Critch
Judy Pelley
Linda Penney
Brittany Ryan

\$2,500+

Adams Construction (1975) Ltd
Akita Equipment
B & DPL Enterprises
Incorporated
BrandSource
Buddy with the Plow
Canadian Jewellery Group
Controlpro Distributors Inc.
Fairfield Inn & Suites by Marriott
Grant Thornton
Heart's Content Fire Brigade
Heart's Content Fire Department
Iron Ore Company of Canada
Islander RV Sales and Rentals
Labrador Jeep Owners
Lions Club Clarenville
McCain Foods
McDonald's - Labrador City

McRoberts Enterprises Inc.
Nape - Local 7701
North East Minor Hockey
Association
Queen Elizabeth Regional High
Students for Change Group
RBC Rewards
SaltWire Network Inc.
Smith Snacks
St. Michael's and All Angels
Weston's Bakery Ltd.
XXIX Venture Limited
Lottie Anstey
Margot Nash
Taedy O'Rourke
Clayton Reid

\$1,000+

Altius Minerals Corporation
Aquarena Employees
Aramark - Fresh Food Company
Atlantic Powertrain & Equipment
Inc.
Atlantic Recreation Ltd.
BWS Manufacturing Ltd.
C & D Family Restaurants Inc.
Cahill Technical Services
Canada Bread
Capital Automotive Group
Capital Precast Limited
Carquest Canada Charitable
Foundation
Chatters Mount Pearl Ltd.
Ches's Fish & Chips
Clarke's Country Corner
Coca Cola Ltd.
Conception Bay South Fire
Department
CR Angels
Dave Gullivers Cabs Ltd.
Delta St. John's Hotel and
Conference Centre
Dominion Recycling Ltd.
East Coast Catering Ltd.
Ecclesiastical Insurance Office
Electrolux
FixAuto

Hamilton Stores Limited
 Hickman Motors
 IceCaps Care Foundation
 International Brotherhood of
 Boilermakers - Local 203
 Investors Group
 Jiffy Cabs
 Kids Forever
 Kindermusik with Robyn Pearce
 King's Point Women's Institute
 Kinsmen Club Botwood
 Kiwanis Club of Gander
 Kruger Products
 Labrador Fisherman's Union
 Shrimp Co. Ltd.
 Labrador Grenfell Regional
 Community Client Services
 Lions Club Bonavista
 Lions Club Mount Pearl
 Lions Club Port Union
 Lions Club Sunnyside
 Long Range Quilters Guild
 Marsh Canada
 McDonald's - Anderson & Goulds
 McDonald's - Bay Roberts
 McDonald's - Clarenville
 McDonald's - Conception Bay
 Highway
 McDonald's - Corner Brook
 McDonald's - Gander
 McDonald's - Grand Falls
 McDonald's - Kenmount
 McDonald's - Marystown
 McDonald's - Mount Pearl
 McDonald's - Paradise
 McDonald's - Topsail Road
 McDonald's - Torbay
 McDonald's - WalMart
 Corner Brook
 McDonald's - WalMart Gander
 McDonald's - WalMart Grand Falls
 McDonald's - WalMart Kelsey

McInnes Cooper - St. John's
 McInnes Cooper - Halifax
 Mile One Harley Davidson
 MUN Medical Students
 Music & Friends
 NAPA Auto Parts
 Newfoundland & Labrador Credit
 Union
 Newfoundland and Labrador
 Snowmobile Federation Inc.
 Nor'Easter Golf Classic
 Association
 Nu-Quest Distribution Inc
 Prime Creative
 Prince of Wales L.O.L. No 26
 Progressive Tractor
 Roebothan McKay Marshall
 Rotary Club of St. John's
 Northwest
 Saputo Dairy Products Canada
 Scotiabank - Atlantic Centralized
 Accounting Unit
 Silverlights Club
 Sobey's - Kelsey Drive
 Sobey's - Ropewalk Lane
 St. Anne's School
 St. George's Anglican Church
 Quilting Ministry
 St. Paul's ACW Officers &
 Members
 StatOil Canada
 Stewart McKelvey
 The Cahill Group
 The Wilds
 The Works
 Three Island Regional Fire
 Department
 Triple F Fundraising for Friends
 Twillingate Island Elementary
 United Way of Newfoundland
 and Labrador Inc
 Valard Construction

Wolverine Supplies
 Bridgette Abbott
 Jennifer Antle
 George Barrett
 Randy and Virginia Bell
 Alice Boyd
 Tina Bradbury
 Isabella Burry
 Doreen Coady
 Louise Cull
 Christopher Dawson
 Paul Evans
 Frances Galgay
 Annette Godsell
 Amanda Holmes
 Frank Howard
 Fay Hudson
 Greer Hunt
 Sarah Knight
 Dwayne Maher
 Ed Martin
 Trudy Michelin
 Hailey Noseworthy
 Keshia Noseworthy
 Pauline Patey
 Valerie Pippy
 Colleen Pittman
 Jane Porter
 David Powell
 Exie Robinson
 Chris Ryan
 Jason Smith
 Jailen Spurrell
 Isabella Steeples
 Melissa Thomas
 Macy Thorne
 Alice Tobin
 Debbie Whitt

Thank you to our generous donors



5 YEARS – 1000 FAMILIES



September 21, 2017

THE PAST FIVE YEARS HAS BEEN INCREDIBLE. In fact, Ronald McDonald House has provided more than 23,000 nights of comfort and care to 1,000 families with a sick or injured child, saving them more than \$3.5M in accommodation costs alone! Now, that's worth celebrating!

Our celebration included a birthday party at Ronald McDonald House, and was attended by families, volunteers and supporters of RMHC. Guests enjoyed tours, children's activities, a barbeque, a celebration cake and our very special guest, Ronald McDonald.

WE WOULD LIKE TO THANK THE FOLLOWING FOR HELPING MAKE THIS CELEBRATION SUCH A SUCCESS:

Ben J. King Photography, Brigus Group, Ches's Famous Fish & Chips, Cola-Cola, Cossette, Jelly Bean Entertainment, Kelly Denine of Party Animals-Balloon Art, Mark Burry (Magician), Morgan's Music, Rotary Club of St. John's Northeast, Tanya Young (Birthday cake), Ronald McDonald and especially, our many volunteers!!



MESSAGE FROM TREASURER

Ronald McDonald House of Newfoundland and Labrador Inc. ("RMHCNL") continues to enjoy the generosity and support of thousands of donors, including individuals, community groups, service organizations, labour organizations, businesses, charities and government. This support takes the form of financial contributions, in-kind contributions of goods and services, participation in a wide variety of fundraising events and countless volunteer hours.

At the end of 2017, RMHCNL has combined net assets of \$1,159,302. This includes the balance invested in capital assets of \$4,922,930; an operating fund reserve of \$1,524,288; a property replacement reserve of \$295,041; a capital project reserve fund of \$136,844 for planned capital projects to be undertaken over the next year; and unrestricted net assets of \$280,193. The Charity has a strong cash and short term investments position of \$2,282,329 at the end of the year.

During 2017 the Charity acquired new tangible capital assets with a cost of \$120,133. The majority of this cost included the expansion of the parking area in order to accommodate the needs of our families, volunteers and program supporters.

The Charity had excess of revenue over expenditures for 2017 of more than \$168,000. Total revenue and other support for the year increased by \$67,492 to a level of \$1,661,116 for the year. Revenue and expenditures included donated goods and services of \$389,801 for 2017 as compared to \$401,603 in 2016.

In terms of expenditures, the cost of operating the charity increased by approximately \$5,156 during the year which represents a 0.4% increase.

On behalf of the Board of Directors I would like to thank our management team, staff and our many volunteers for their efforts in the continued operational and financial success of Ronald McDonald House.

The financial information provided in this annual report is in a condensed format; however complete audited financial statements of the organization are available on request at the charity office. The annual financial statements reflect revisions in reporting format to adopt a Canada wide format adopted for all Ronald McDonald Houses.



WILLIAM BUDGELL

A handwritten signature in cursive script that reads "William Budgetell".

Treasurer
Ronald McDonald House Charities
Newfoundland and Labrador

FINANCIAL REPORT

Condensed Statement of Revenue and Expenditures and Changes in Fund Balances

Year ended December 31	2017	2016
Revenue		
Contributions	\$ 976,061	\$ 964,380
Fundraising Activities/Events	602,050	550,577
RMH Room Donations/Fees	62,256	68,590
Other Revenues	26,749	16,077
	<u>1,667,116</u>	<u>1,599,624</u>
Expenditures		
Program	1,019,328	1,045,443
Management and General	77,170	70,140
Fundraising	419,962	395,121
	<u>1,516,460</u>	<u>1,510,704</u>
Excess of Operating Revenue over Expenditures for the year	150,656	88,920
Investment Income	17,761	14,102
	<u>168,417</u>	<u>103,022</u>
Excess of Revenue over Expenditures	\$ 168,417	\$ 103,022

Condensed Statement of Financial Position

At December 31	2017	2016
Assets		
Cash and cash equivalents	\$ 572,378	\$ 293,555
Investments	1,709,951	1,692,189
Accounts receivable	22,144	10,387
Prepaid expenses and other assets	34,570	27,978
Capital assets	4,922,930	5,032,680
	<u>\$ 7,261,973</u>	<u>\$ 7,056,789</u>
Liabilities		
Accounts payables and accrued liabilities	\$ 102,671	\$ 62,243
Deferred Revenue	-	3,661
	<u>\$ 102,671</u>	<u>\$ 65,904</u>
Fund Balances		
Capital Asset Fund	5,354,821	5,501,161
Restricted Fund	1,524,288	1,460,321
General Fund	280,193	29,403
	<u>7,159,302</u>	<u>6,990,885</u>
	<u>\$ 7,261,973</u>	<u>\$ 7,056,789</u>



Peyton Toms (Age 23 Months),
with brother Liam (Age 4)
King's Point, NL
21 stays, 53 nights

**KEEPING FAMILIES CLOSE,
THANKS TO YOU.**



RMHC[®]

Newfoundland & Labrador

Keeping families close

RMHCNL.CA

P.O. Box 28091
150 Clinch Crescent,
St John's, NL A1B 4J8

info@rmhcnl.ca
1-855-955-HOME (4663)
(709) 738-0000

Charitable Registration Number: 85050 2865 RR0001